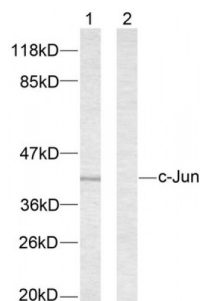


Abbexa Ltd, Innovation Centre, Cambridge Science Park, Cambridge, CB4 0EY, UK  
Telephone: +44 (0) 1223 755950 - Fax: +44 (0) 1223 755951 - E-Mail: [info@abbexa.com](mailto:info@abbexa.com)

## Jun Proto-Oncogene (c-Jun) Antibody

Catalogue No.:abx012851



Western blot analysis of extracts from NIH/3T3 cells treated with UV. Line1: Using c-Jun (epitope around residue 63) Antibody (abx012851) ; Line2: The same antibody preincubated with synthesized peptide.

Rabbit polyclonal antibody against c-Jun protein. Immunogen region is Internal.

<b>Target:</b>	c-Jun
<b>Reactivity:</b>	Human, Mouse, Rat
<b>Host:</b>	Rabbit
<b>Clonality:</b>	Polyclonal
<b>Tested Applications:</b>	ELISA, WB
<b>Recommended dilutions:</b>	WB: 1/500 - 1/3000, ELISA: 1/5000. Optimal dilutions/concentrations should be determined by the end user.
<b>Immunogen:</b>	The antiserum was produced against synthesized non-phosphopeptide derived from human c-Jun around the phosphorylation site of Serine 63.
<b>Purification:</b>	Purified from rabbit antiserum by affinity chromatography using epitope-specific immunogen.
<b>Form:</b>	Liquid
<b>Isotype:</b>	IgG
<b>Conjugation:</b>	Unconjugated
<b>Storage:</b>	Aliquot and store at -20 °C. Avoid repeated freeze/thaw cycles.
<b>Swiss Prot:</b>	<a href="#">P05412</a>
<b>Buffer:</b>	PBS (without $Mg^{2+}$ and $Ca^{2+}$ ), pH 7.4, 150 mM NaCl, 0.02% sodium azide, 50% glycerol.
<b>Note:</b>	This product is for research use only.