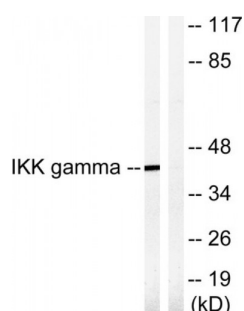


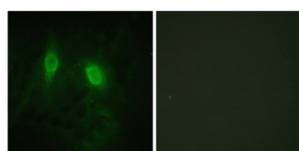
Abbexa Ltd, Innovation Centre, Cambridge Science Park, Cambridge, CB4 0EY, UK
Telephone: +44 (0) 1223 755950 - Fax: +44 (0) 1223 755951 - E-Mail: info@abbexa.com

Inhibitor of Nuclear Factor Kappa-B Kinase Subunit Gamma (IKK gamma) Antibody

Catalogue No.: abx012840



Western blot analysis of extracts from HepG2 cells, treated with Anisomycin (0.5uM, 5hours), using IKK- gamma (epitope around residue 85) antibody.



Immunofluorescence analysis of HeLa cells, using IKK- gamma (epitope around residue 85) antibody.

Rabbit polyclonal antibody against IKK gamma protein. Immunogen region is Internal.

Target: IKK gamma

Reactivity: Human

Host: Rabbit

Clonality: Polyclonal

Tested Applications: ELISA, WB, IF/ICC

Recommended dilutions: WB: 1/500 - 1/3000, IF/ICC: 1/100 - 1/500, ELISA: 1/20000. Optimal dilutions/concentrations should be determined by the end user.

Immunogen: The antiserum was produced against synthesized non-phosphopeptide derived from human IKK gamma around the phosphorylation site of serine 85 (Q-A-SP-Q-R).

Purification: Purified from rabbit antiserum by affinity chromatography using epitope-specific immunogen.

Form: Liquid

Isotype: IgG

Abbexa Ltd, Innovation Centre, Cambridge Science Park, Cambridge, CB4 0EY, UK
Telephone: +44 (0) 1223 755950 - Fax: +44 (0) 1223 755951 - E-Mail: info@abbexa.com

Conjugation: Unconjugated

Storage: Aliquot and store at -20 °C. Avoid repeated freeze/thaw cycles.

Swiss Prot: [Q9Y6K9](#)

Buffer: PBS (without Mg^{2+} and Ca^{2+}), pH 7.4, 150 mM NaCl, 0.02% sodium azide, 50% glycerol.

Note: This product is for research use only.