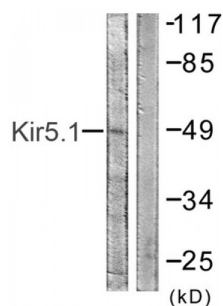


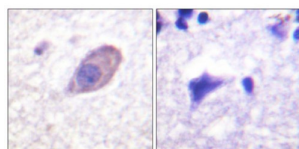
Abbexa Ltd, Innovation Centre, Cambridge Science Park, Cambridge, CB4 0EY, UK
Telephone: +44 (0) 1223 755950 - Fax: +44 (0) 1223 755951 - E-Mail: info@abbexa.com

Kir5.1 (Kir5.1) Antibody

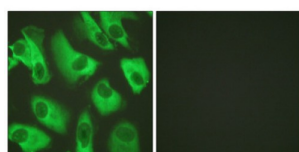
Catalogue No.: abx012832



Western blot analysis of extracts from HeLa cells, using Kir5.1 (epitope around residue 416) antibody.



Immunohistochemistry analysis of paraffin-embedded human brain tissue using Kir5.1 (epitope around residue 416) antibody.



Immunofluorescence analysis of HeLa cells, using Kir5.1 (epitope around residue 416) antibody.

Rabbit polyclonal antibody against Kir5.1 protein. Immunogen region is C-terminal.

Target: Kir5.1

Reactivity: Human, Mouse, Rat

Host: Rabbit

Clonality: Polyclonal

Tested Applications: ELISA, WB, IHC, IF/ICC

Recommended dilutions: WB: 1/500 - 1/3000, IHC: 1/50 - 1/100, IF/ICC: 1/100 - 1/500, ELISA: 1/10000. Optimal dilutions/concentrations should be determined by the end user.

Immunogen: The antiserum was produced against synthesized non-phosphopeptide derived from human Kir5.1 around the phosphorylation site of serine 416 (M-E-SP-Q-M).

Abbexa Ltd, Innovation Centre, Cambridge Science Park, Cambridge, CB4 0EY, UK
Telephone: +44 (0) 1223 755950 - Fax: +44 (0) 1223 755951 - E-Mail: info@abbexa.com

Purification:	Purified from rabbit antiserum by affinity chromatography using epitope-specific immunogen.
Form:	Liquid
Isotype:	IgG
Conjugation:	Unconjugated
Storage:	Aliquot and store at -20 °C. Avoid repeated freeze/thaw cycles.
Swiss Prot:	<u>Q9Z307</u> <u>Q9NPI9</u>
Buffer:	PBS (without Mg^{2+} and Ca^{2+}), pH 7.4, 150 mM NaCl, 0.02% sodium azide, 50% glycerol.
Note:	This product is for research use only.