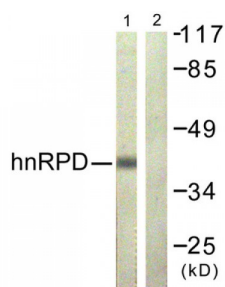


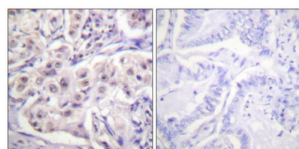
Abbexa Ltd, Innovation Centre, Cambridge Science Park, Cambridge, CB4 0EY, UK  
Telephone: +44 (0) 1223 755950 - Fax: +44 (0) 1223 755951 - E-Mail: [info@abbexa.com](mailto:info@abbexa.com)

## Heterogeneous Nuclear Ribonucleoprotein D0 (hnRPD) Antibody

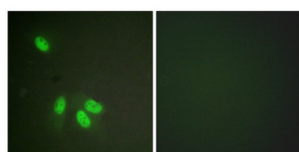
Catalogue No.: abx012828



Western blot analysis of extracts from 293 cells, using hnRPD (epitope around residue 83) antibody.



Immunohistochemistry analysis of paraffin-embedded human lung carcinoma tissue using hnRPD (epitope around residue 83) antibody.



Immunofluorescence analysis of HeLa cells, using hnRPD (epitope around residue 83) antibody.

Rabbit polyclonal antibody against hnRPD protein. Immunogen region is Internal.

**Target:** hnRPD

**Reactivity:** Human, Mouse, Rat

**Host:** Rabbit

**Clonality:** Polyclonal

**Tested Applications:** ELISA, WB, IHC, IF/ICC

**Recommended dilutions:** WB: 1/500 - 1/3000, IHC: 1/50 - 1/100, IF/ICC: 1/100 - 1/500, ELISA: 1/20000. Optimal dilutions/concentrations should be determined by the end user.

**Immunogen:** The antiserum was produced against synthesized non-phosphopeptide derived from human hnRPD around the phosphorylation site of serine 83 (N-S-SP-P-R).

Abbexa Ltd, Innovation Centre, Cambridge Science Park, Cambridge, CB4 0EY, UK  
Telephone: +44 (0) 1223 755950 - Fax: +44 (0) 1223 755951 - E-Mail: [info@abbexa.com](mailto:info@abbexa.com)

<b>Purification:</b>	Purified from rabbit antiserum by affinity chromatography using epitope-specific immunogen.
<b>Form:</b>	Liquid
<b>Isotype:</b>	IgG
<b>Conjugation:</b>	Unconjugated
<b>Storage:</b>	Aliquot and store at -20 °C. Avoid repeated freeze/thaw cycles.
<b>Swiss Prot:</b>	<a href="#"><u>Q14103</u></a>
<b>Buffer:</b>	PBS (without $Mg^{2+}$ and $Ca^{2+}$ ), pH 7.4, 150 mM NaCl, 0.02% sodium azide, 50% glycerol.
<b>Note:</b>	This product is for research use only.