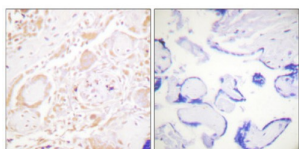


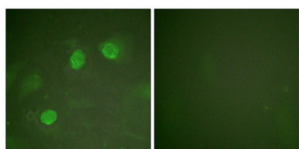
Abbexa Ltd, Innovation Centre, Cambridge Science Park, Cambridge, CB4 0EY, UK
Telephone: +44 (0) 1223 755950 - Fax: +44 (0) 1223 755951 - E-Mail: info@abbexa.com

GATA Binding Protein 3 (GATA3) Antibody

Catalogue No.: abx012817



Immunohistochemistry analysis of paraffin-embedded human placenta tissue using GATA3 antibody.



Immunofluorescence analysis of HeLa cells, using GATA3 antibody.

Rabbit polyclonal antibody against GATA3 protein. Immunogen region is Internal.

Target: GATA3

Reactivity: Human, Mouse

Host: Rabbit

Clonality: Polyclonal

Tested Applications: ELISA, IHC, IF/ICC

Recommended dilutions: IHC: 1/50 - 1/100, IF/ICC: 1/100 - 1/500, ELISA: 1/1000. Optimal dilutions/concentrations should be determined by the end user.

Immunogen: The antiserum was produced against synthesized non-phosphopeptide derived from human GATA3 around the phosphorylation site of residue 308.

Purification: Purified from rabbit antiserum by affinity chromatography using epitope-specific immunogen.

Form: Liquid

Isotype: IgG

Conjugation: Unconjugated

Abbexa Ltd, Innovation Centre, Cambridge Science Park, Cambridge, CB4 0EY, UK
Telephone: +44 (0) 1223 755950 - Fax: +44 (0) 1223 755951 - E-Mail: info@abbexa.com

Storage: Aliquot and store at -20 °C. Avoid repeated freeze/thaw cycles.

Swiss Prot: [P23771](#) [P23769](#)

Buffer: PBS (without Mg^{2+} and Ca^{2+}), pH 7.4, 150 mM NaCl, 0.02% sodium azide, 50% glycerol.

Note: This product is for research use only.