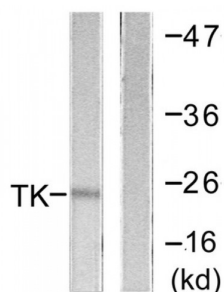


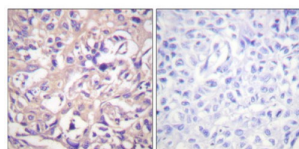
Abbexa Ltd, Innovation Centre, Cambridge Science Park, Cambridge, CB4 0EY, UK
Telephone: +44 (0) 1223 755950 - Fax: +44 (0) 1223 755951 - E-Mail: info@abbexa.com

Thymidine Kinase (TK) Antibody

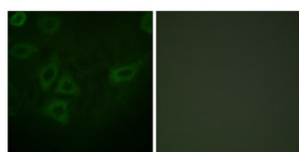
Catalogue No.: abx012791



Western blot analysis of extracts from COLO205 cells, using TK (epitope around residue 13) antibody.



Immunohistochemistry analysis of paraffin-embedded human breast carcinoma tissue using TK (epitope around residue 13) antibody.



Immunofluorescence analysis of HepG2 cells, using TK (epitope around residue 13) antibody.

Rabbit polyclonal antibody against TK protein. Immunogen region is N-terminal.

Target:	TK
Reactivity:	Human, Mouse, Rat
Host:	Rabbit
Clonality:	Polyclonal
Tested Applications:	ELISA, WB, IHC, IF/ICC
Recommended dilutions:	WB: 1/500 - 1/3000, IHC: 1/50 - 1/100, IF/ICC: 1/100 - 1/500, ELISA: 1/1000. Optimal dilutions/concentrations should be determined by the end user.
Immunogen:	The antiserum was produced against synthesized non-phosphopeptide derived from human TK around the phosphorylation site of serine 13 (P-G-SP-P-S).

Abbexa Ltd, Innovation Centre, Cambridge Science Park, Cambridge, CB4 0EY, UK
Telephone: +44 (0) 1223 755950 - Fax: +44 (0) 1223 755951 - E-Mail: info@abbexa.com

Purification:	Purified from rabbit antiserum by affinity chromatography using epitope-specific immunogen.
Form:	Liquid
Isotype:	IgG
Conjugation:	Unconjugated
Storage:	Aliquot and store at -20 °C. Avoid repeated freeze/thaw cycles.
Swiss Prot:	<u>P04183</u>
Enzyme Commission Number:	EC 2.7.1.21
Buffer:	PBS (without Mg ²⁺ and Ca ²⁺), pH 7.4, 150 mM NaCl, 0.02% sodium azide, 50% glycerol.
Note:	This product is for research use only.