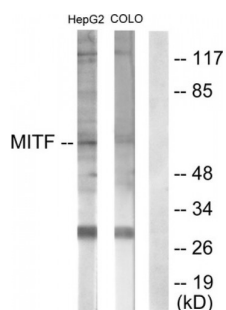


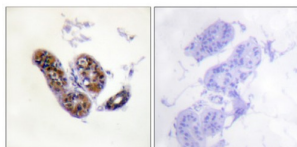
Abbexa Ltd, Innovation Centre, Cambridge Science Park, Cambridge, CB4 0EY, UK
Telephone: +44 (0) 1223 755950 - Fax: +44 (0) 1223 755951 - E-Mail: info@abbexa.com

Melanogenesis Associated Transcription Factor (MITF) Antibody

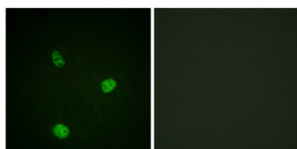
Catalogue No.: abx012782



Western blot analysis of extracts from HepG2 cells (lane 1) and COLO205 cells (lane 2), using MITF (epitope around residue 180/73) antibody.



Immunohistochemistry analysis of paraffin-embedded human skin tissue using MITF (epitope around residue 180/73) antibody.



Immunofluorescence analysis of HeLa cells, using MITF (epitope around residue 180/73) antibody.

Rabbit polyclonal antibody against MITF protein. Immunogen region is Internal.

Target: MITF

Reactivity: Human, Mouse

Host: Rabbit

Clonality: Polyclonal

Tested Applications: ELISA, WB, IHC, IF/ICC

Recommended dilutions: WB: 1/500 - 1/3000, IHC: 1/50 - 1/100, IF/ICC: 1/100 - 1/500, ELISA: 1/10000. Optimal dilutions/concentrations should be determined by the end user.

Immunogen: The antiserum was produced against synthesized non-phosphopeptide derived from human MITF around the phosphorylation site of serine 180/73 (P-N-SP-P-M).

Abbexa Ltd, Innovation Centre, Cambridge Science Park, Cambridge, CB4 0EY, UK
Telephone: +44 (0) 1223 755950 - Fax: +44 (0) 1223 755951 - E-Mail: info@abbexa.com

Purification:	Purified from rabbit antiserum by affinity chromatography using epitope-specific immunogen.
Form:	Liquid
Isotype:	IgG
Conjugation:	Unconjugated
Storage:	Aliquot and store at -20 °C. Avoid repeated freeze/thaw cycles.
Swiss Prot:	<u>O75030</u>
Buffer:	PBS (without Mg^{2+} and Ca^{2+}), pH 7.4, 150 mM NaCl, 0.02% sodium azide, 50% glycerol.
Note:	This product is for research use only.