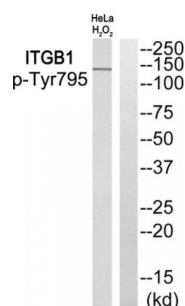


Abbexa Ltd, Innovation Centre, Cambridge Science Park, Cambridge, CB4 0EY, UK  
Telephone: +44 (0) 1223 755950 - Fax: +44 (0) 1223 755951 - E-Mail: [info@abbexa.com](mailto:info@abbexa.com)

## ITGB1 (Phospho-Tyr795) Antibody

Catalogue No.: abx012725



Western blot analysis of extracts from HeLa cells treated with H<sub>2</sub>O<sub>2</sub>, using ITGB1 (Phospho-Tyr795) antibody.

Rabbit polyclonal antibody against ITGB1 protein. Immunogen region is C-terminal. Specificity is as follows for the reactive species: H:Y795, M:Y795, R:Y796.

**Target:** ITGB1

**Reactivity:** Human, Mouse, Rat

**Host:** Rabbit

**Clonality:** Polyclonal

**Tested Applications:** ELISA, WB

**Recommended dilutions:** WB: 1/500 - 1/3000, ELISA: 1/40000. Optimal dilutions/concentrations should be determined by the end user.

**Immunogen:** The antiserum was produced against synthesized phosphopeptide derived from human ITGB1 around the phosphorylation site of tyrosine 795 (P-K-YP-E-G).

**Purification:** Purified from rabbit antiserum by affinity chromatography using epitope-specific immunogen.

**Form:** Liquid

**Isotype:** IgG

**Conjugation:** Unconjugated

**Storage:** Aliquot and store at -20 °C. Avoid repeated freeze/thaw cycles.

**Swiss Prot:** [P05556](#)

**Buffer:** PBS (without Mg<sup>2+</sup> and Ca<sup>2+</sup>), pH 7.4, 150 mM NaCl, 0.02% sodium azide, 50% glycerol.

**Note:** This product is for research use only.