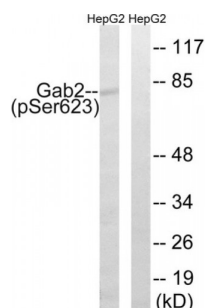


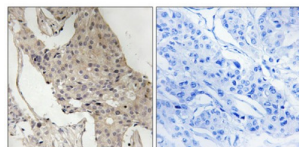
Abbexa Ltd, Innovation Centre, Cambridge Science Park, Cambridge, CB4 0EY, UK
Telephone: +44 (0) 1223 755950 - Fax: +44 (0) 1223 755951 - E-Mail: info@abbexa.com

GRB2-Associated-Binding Protein 2 (GAB2) Antibody

Catalogue No.: abx012692



Western blot analysis of extracts from HepG2 cells, treated with PMA (125ng/ml, 30mins), using Gab2 (Phospho-Ser623) antibody.



Immunohistochemistry analysis of paraffin-embedded human breast carcinoma tissue, using Gab2 (Phospho-Ser623) antibody.

Rabbit polyclonal antibody against Gab2 protein. Immunogen region is C-terminal. Specificity is as follows for the reactive species: H:S623, M:S612, R:S612.

Target: Gab2

Reactivity: Human, Mouse, Rat

Host: Rabbit

Clonality: Polyclonal

Tested Applications: ELISA, WB, IHC

Recommended dilutions: WB: 1/500 - 1/3000, IHC: 1/50 - 1/100, ELISA: 1/1000. Optimal dilutions/concentrations should be determined by the end user.

Immunogen: The antiserum was produced against synthesized phosphopeptide derived from human Gab2 around the phosphorylation site of serine 623 (PS-SP-P-S).

Purification: Purified from rabbit antiserum by affinity chromatography using epitope-specific immunogen.

Form: Liquid

Isotype: IgG

Abbexa Ltd, Innovation Centre, Cambridge Science Park, Cambridge, CB4 0EY, UK
Telephone: +44 (0) 1223 755950 - Fax: +44 (0) 1223 755951 - E-Mail: info@abbexa.com

Conjugation: Unconjugated

Storage: Aliquot and store at -20 °C. Avoid repeated freeze/thaw cycles.

Swiss Prot: [Q9UQC2](#)

Buffer: PBS (without Mg^{2+} and Ca^{2+}), pH 7.4, 150 mM NaCl, 0.02% sodium azide, 50% glycerol.

Note: This product is for research use only.