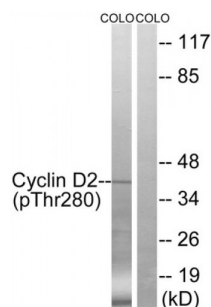


Abbexa Ltd, Innovation Centre, Cambridge Science Park, Cambridge, CB4 0EY, UK
Telephone: +44 (0) 1223 755950 - Fax: +44 (0) 1223 755951 - E-Mail: info@abbexa.com

Cyclin D2 (Phospho-Thr280) Antibody

Catalogue No.: abx012685



Western blot analysis of extracts from COLO cells, treated with EGF (200ng/ml, 30mins), using Cyclin D2 (Phospho-Thr280) antibody.

Rabbit polyclonal antibody against Cyclin D2 protein. Immunogen region is C-terminal. Specificity is as follows for the reactive species: H:T280, M:T279, R:T279.

Target: Cyclin D2

Reactivity: Human, Mouse, Rat

Host: Rabbit

Clonality: Polyclonal

Tested Applications: ELISA, WB

Recommended dilutions: WB: 1/500 - 1/3000, ELISA: 1/1000. Optimal dilutions/concentrations should be determined by the end user.

Immunogen: The antiserum was produced against synthesized phosphopeptide derived from human Cyclin D2 around the phosphorylation site of threonine 280 (A-S-TP-P-T).

Purification: Purified from rabbit antiserum by affinity chromatography using epitope-specific immunogen.

Form: Liquid

Isotype: IgG

Conjugation: Unconjugated

Storage: Aliquot and store at -20 °C. Avoid repeated freeze/thaw cycles.

Swiss Prot: [P30279](#)

Buffer: PBS (without Mg^{2+} and Ca^{2+}), pH 7.4, 150 mM NaCl, 0.02% sodium azide, 50% glycerol.

Note: This product is for research use only.