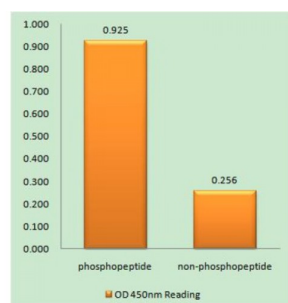


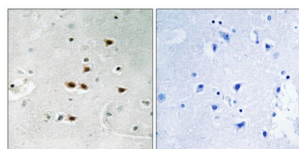
Abbexa Ltd, Innovation Centre, Cambridge Science Park, Cambridge, CB4 0EY, UK  
Telephone: +44 (0) 1223 755950 - Fax: +44 (0) 1223 755951 - E-Mail: [info@abbexa.com](mailto:info@abbexa.com)

## Itchy E3 Ubiquitin Protein Ligase (ITCH) Antibody

Catalogue No.: abx012656



ITCH (Phospho-Tyr420) antibody reacts with epitope-specific phosphopeptide and corresponding non-phosphopeptide. The absorbance readings at 450 nm are shown in the ELISA figure.



Immunohistochemistry analysis of paraffin-embedded human brain tissue using ITCH (Phospho-Tyr420) antibody.

Rabbit polyclonal antibody against ITCH protein. Immunogen region is Internal. Specificity is as follows for the reactive species: H:Y420, M:Y381.

<b>Target:</b>	ITCH
<b>Reactivity:</b>	Human, Mouse
<b>Host:</b>	Rabbit
<b>Clonality:</b>	Polyclonal
<b>Tested Applications:</b>	ELISA, IHC
<b>Recommended dilutions:</b>	IHC: 1/50 - 1/100, ELISA: 1/20000. Optimal dilutions/concentrations should be determined by the end user.
<b>Immunogen:</b>	The antiserum was produced against synthesized phosphopeptide derived from human ITCH around the phosphorylation site of tyrosine 420 (F-I-YP-G-N).
<b>Purification:</b>	Purified from rabbit antiserum by affinity chromatography using epitope-specific immunogen.
<b>Form:</b>	Liquid
<b>Isotype:</b>	IgG

Abbexa Ltd, Innovation Centre, Cambridge Science Park, Cambridge, CB4 0EY, UK  
Telephone: +44 (0) 1223 755950 - Fax: +44 (0) 1223 755951 - E-Mail: [info@abbexa.com](mailto:info@abbexa.com)

**Conjugation:** Unconjugated

**Storage:** Aliquot and store at -20 °C. Avoid repeated freeze/thaw cycles.

**Swiss Prot:** [Q96J02](#)

**Enzyme Commission Number:** EC 6.3.2.-

**Buffer:** PBS (without  $Mg^{2+}$  and  $Ca^{2+}$ ), pH 7.4, 150 mM NaCl, 0.02% sodium azide, 50% glycerol.

**Note:** This product is for research use only.