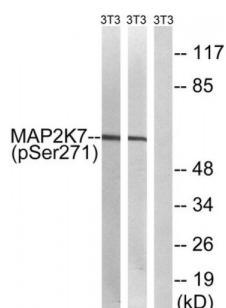


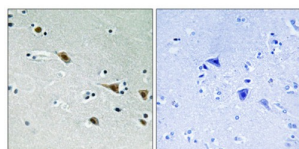
Abbexa Ltd, Innovation Centre, Cambridge Science Park, Cambridge, CB4 0EY, UK
Telephone: +44 (0) 1223 755950 - Fax: +44 (0) 1223 755951 - E-Mail: info@abbexa.com

MAP2K7 (Phospho-Ser271) Antibody

Catalogue No.: abx012611



Western blot analysis of extracts from 3T3 cells treated with insulin (0.01U/ml, 15mins) and 3T3 cells treated with EGF (200ng/ml, 30mins), using MAP2K7 (Phospho-Ser271) antibody.



Immunohistochemistry analysis of paraffin-embedded human brain tissue, using MAP2K7 (Phospho-Ser271) antibody.

Rabbit polyclonal antibody against MAP2K7 protein. Immunogen region is Internal. Specificity is as follows for the reactive species: H:S271, M:S287, R:S271.

Target:	MAP2K7
Reactivity:	Human, Mouse, Rat
Host:	Rabbit
Clonality:	Polyclonal
Tested Applications:	ELISA, WB, IHC
Recommended dilutions:	WB: 1/500 - 1/3000, IHC: 1/50 - 1/100, ELISA: 1/20000. Optimal dilutions/concentrations should be determined by the end user.
Immunogen:	The antiserum was produced against synthesized phosphopeptide derived from human MAP2K7 around the phosphorylation site of serine 271 (V-D-SP-K-A).
Purification:	Purified from rabbit antiserum by affinity chromatography using epitope-specific immunogen.
Form:	Liquid
Isotype:	IgG

Abbexa Ltd, Innovation Centre, Cambridge Science Park, Cambridge, CB4 0EY, UK
Telephone: +44 (0) 1223 755950 - Fax: +44 (0) 1223 755951 - E-Mail: info@abbexa.com

Conjugation: Unconjugated

Storage: Aliquot and store at -20 °C. Avoid repeated freeze/thaw cycles.

Swiss Prot: [O14733](#)

Enzyme Commission Number: EC 2.7.12.2

Buffer: PBS (without Mg^{2+} and Ca^{2+}), pH 7.4, 150 mM NaCl, 0.02% sodium azide, 50% glycerol.

Note: This product is for research use only.