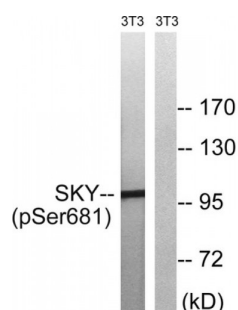


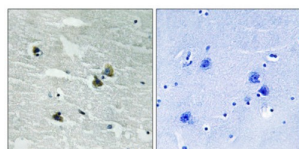
Abbexa Ltd, Innovation Centre, Cambridge Science Park, Cambridge, CB4 0EY, UK
Telephone: +44 (0) 1223 755950 - Fax: +44 (0) 1223 755951 - E-Mail: info@abbexa.com

MER / SKY (Phospho-Tyr749 / 681) Antibody

Catalogue No.: abx012609



Western blot analysis of extracts from 3T3 cells, treated with EGF (200ng/ml, 5mins), using MER/SKY (Phospho-Tyr749/681) antibody.



Immunohistochemistry analysis of paraffin-embedded human brain tissue using MER/SKY (Phospho-Tyr749/681) antibody.

Rabbit polyclonal antibody against MER/SKY protein. Immunogen region is C-terminal. Specificity is as follows for the reactive species: H:Y749/681, M:Y744/671, R:Y744/671.

Target:	MER/SKY
Reactivity:	Human, Mouse, Rat
Host:	Rabbit
Clonality:	Polyclonal
Tested Applications:	ELISA, WB, IHC
Recommended dilutions:	WB: 1/500 - 1/3000, IHC: 1/50 - 1/100, ELISA: 1/10000. Optimal dilutions/concentrations should be determined by the end user.
Immunogen:	The antiserum was produced against synthesized phosphopeptide derived from human MER/SKY around the phosphorylation site of tyrosine 749/681 (K-I-YP-S-G).
Purification:	Purified from rabbit antiserum by affinity chromatography using epitope-specific immunogen.
Form:	Liquid
Isotype:	IgG

Abbexa Ltd, Innovation Centre, Cambridge Science Park, Cambridge, CB4 0EY, UK
Telephone: +44 (0) 1223 755950 - Fax: +44 (0) 1223 755951 - E-Mail: info@abbexa.com

Conjugation: Unconjugated

Storage: Aliquot and store at -20 °C. Avoid repeated freeze/thaw cycles.

Swiss Prot: [Q12866](#) [Q06418](#)

Enzyme Commission Number: EC 2.7.10.1

Buffer: PBS (without Mg^{2+} and Ca^{2+}), pH 7.4, 150 mM NaCl, 0.02% sodium azide, 50% glycerol.

Note: This product is for research use only.