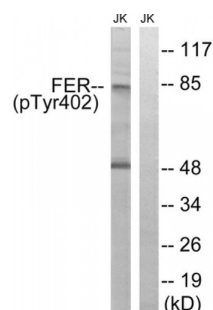


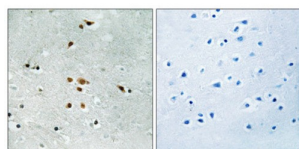
Abbexa Ltd, Innovation Centre, Cambridge Science Park, Cambridge, CB4 0EY, UK
Telephone: +44 (0) 1223 755950 - Fax: +44 (0) 1223 755951 - E-Mail: info@abbexa.com

Tyrosine Protein Kinase Fer (FER) Antibody

Catalogue No.: abx012599



Western blot analysis of extracts from Jurkat cells, treated with starved (24 hours), using FER (Phospho-Tyr402) antibody.



Immunohistochemistry analysis of paraffin-embedded human brain tissue using FER (Phospho-Tyr402) antibody.

Rabbit polyclonal antibody against FER protein. Immunogen region is Internal. Specificity is as follows for the reactive species: H:Y402, M:Y402.

| | |
|-------------------------------|--|
| Target: | FER |
| Reactivity: | Human, Mouse |
| Host: | Rabbit |
| Clonality: | Polyclonal |
| Tested Applications: | ELISA, WB, IHC |
| Recommended dilutions: | WB: 1/500 - 1/3000, IHC: 1/50 - 1/100, ELISA: 1/20000. Optimal dilutions/concentrations should be determined by the end user. |
| Immunogen: | The antiserum was produced against synthesized phosphopeptide derived from human FER around the phosphorylation site of tyrosine 402 (V-N-YP-E-E). |
| Purification: | Purified from rabbit antiserum by affinity chromatography using epitope-specific immunogen. |
| Form: | Liquid |
| Isotype: | IgG |

Abbexa Ltd, Innovation Centre, Cambridge Science Park, Cambridge, CB4 0EY, UK
Telephone: +44 (0) 1223 755950 - Fax: +44 (0) 1223 755951 - E-Mail: info@abbexa.com

Conjugation: Unconjugated

Storage: Aliquot and store at -20 °C. Avoid repeated freeze/thaw cycles.

Swiss Prot: [P16591](#)

Enzyme Commission Number: EC 2.7.10.2

Buffer: PBS (without Mg^{2+} and Ca^{2+}), pH 7.4, 150 mM NaCl, 0.02% sodium azide, 50% glycerol.

Note: This product is for research use only.