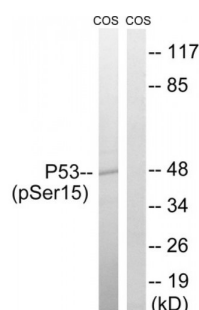


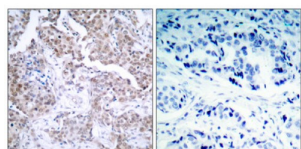
Abbexa Ltd, Innovation Centre, Cambridge Science Park, Cambridge, CB4 0EY, UK
Telephone: +44 (0) 1223 755950 - Fax: +44 (0) 1223 755951 - E-Mail: info@abbexa.com

p53 (Phospho-Ser15) Antibody

Catalogue No.: abx012560



Western blot analysis of extracts from COS7 cells, using p53 (Phospho-Ser15) antibody.



Immunohistochemistry analysis of paraffin-embedded human breast carcinoma tissue, using p53 (Phospho-Ser15) antibody.

Rabbit polyclonal antibody against p53 protein. Immunogen region is N-terminal. Specificity is as follows for the reactive species: H:S15, R:S15.

Target: p53

Reactivity: Human, Rat

Host: Rabbit

Clonality: Polyclonal

Tested Applications: ELISA, WB, IHC, IP

Recommended dilutions: IHC: 1/50 - 1/100, ELISA: 1/10000, WB: 1/500 - 1/3000. Optimal dilutions/concentrations should be determined by the end user.

Immunogen: The antiserum was produced against synthesized phosphopeptide derived from human p53 around the phosphorylation site of Serine 15 (P-L-SP-Q-E).

Purification: Purified from rabbit antiserum by affinity chromatography using epitope-specific immunogen.

Form: Liquid

Isotype: IgG

Abbexa Ltd, Innovation Centre, Cambridge Science Park, Cambridge, CB4 0EY, UK
Telephone: +44 (0) 1223 755950 - Fax: +44 (0) 1223 755951 - E-Mail: info@abbexa.com

Conjugation: Unconjugated

Storage: Aliquot and store at -20 °C. Avoid repeated freeze/thaw cycles.

Swiss Prot: [P04637](#)

Buffer: PBS (without Mg^{2+} and Ca^{2+}), pH 7.4, 150 mM NaCl, 0.02% sodium azide, 50% glycerol.

Note: This product is for research use only.