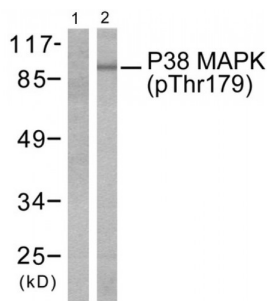


Abbexa Ltd, Innovation Centre, Cambridge Science Park, Cambridge, CB4 0EY, UK
Telephone: +44 (0) 1223 755950 - Fax: +44 (0) 1223 755951 - E-Mail: info@abbexa.com

p38 MAPK (Phospho-Thr180) Antibody

Catalogue No.: abx012558



Western blot analysis of extracts from Hela cells treated with TNF- alpha (20ng/ml, 5mins), using P38 MAPK (phospho-Thr180) antibody (Line 1 and 2).

Rabbit polyclonal antibody against p38 MAPK protein. Immunogen region is Internal. Specificity is as follows for the reactive species: H:T180, M:T180, R:T180.

Target: p38 MAPK

Reactivity: Human, Mouse, Rat

Host: Rabbit

Clonality: Polyclonal

Tested Applications: ELISA, WB

Recommended dilutions: WB: 1/500 - 1/3000, ELISA: 1/40000. Optimal dilutions/concentrations should be determined by the end user.

Immunogen: The antiserum was produced against synthesized phosphopeptide derived from human P38 MAPK around the phosphorylation site of threonine 179 (E-M-TP-G-Y).

Purification: Purified from rabbit antiserum by affinity chromatography using epitope-specific immunogen.

Form: Liquid

Isotype: IgG

Conjugation: Unconjugated

Storage: Aliquot and store at -20 °C. Avoid repeated freeze/thaw cycles.

Swiss Prot: [Q16539](#)

Buffer: PBS (without Mg^{2+} and Ca^{2+}), pH 7.4, 150 mM NaCl, 0.02% sodium azide, 50% glycerol.

Note: This product is for research use only.