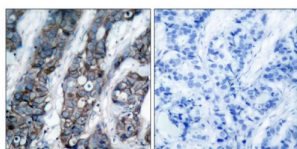


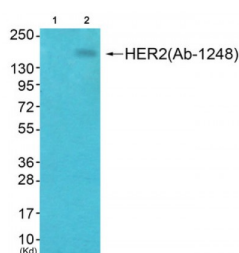
Abbexa Ltd, Innovation Centre, Cambridge Science Park, Cambridge, CB4 0EY, UK
Telephone: +44 (0) 1223 755950 - Fax: +44 (0) 1223 755951 - E-Mail: info@abbexa.com

Receptor Tyrosine-Protein Kinase ErbB-2 (ERBB2) Antibody

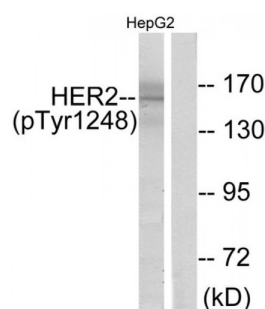
Catalogue No.: abx012542



Western blot analysis of extracts from HepG2 cells, using HER2 (phospho-Tyr1248) antibody.



Immunohistochemical analysis of paraffin-embedded human breast carcinoma tissue, using HER2 (phospho-Tyr1248) antibody.



Western blot analysis of extracts from HepG2 cells, using HER2 (phospho-Tyr1248) antibody.

Rabbit polyclonal antibody against HER2 protein. Immunogen region is C-terminal. Specificity is as follows for the reactive species: H:Y1248, M:Y1249, R:Y1250.

Target: HER2

Reactivity: Human, Mouse, Rat

Host: Rabbit

Clonality: Polyclonal

Tested Applications: ELISA, WB, IHC

Recommended dilutions: WB: 1/500 - 1/3000, IHC: 1/50 - 1/100, ELISA: 1/20000. Optimal dilutions/concentrations should be determined by the end user.

Abbexa Ltd, Innovation Centre, Cambridge Science Park, Cambridge, CB4 0EY, UK
Telephone: +44 (0) 1223 755950 - Fax: +44 (0) 1223 755951 - E-Mail: info@abbexa.com

Immunogen:	The antiserum was produced against synthesized phosphopeptide derived from human HER2 around the phosphorylation site of tyrosine1248 (P-E-YP-L-G).
Purification:	Purified from rabbit antiserum by affinity chromatography using epitope-specific immunogen.
Form:	Liquid
Isotype:	IgG
Conjugation:	Unconjugated
Storage:	Aliquot and store at -20 °C. Avoid repeated freeze/thaw cycles.
Swiss Prot:	<u>P04626</u>
Buffer:	PBS (without Mg^{2+} and Ca^{2+}), pH 7.4, 150 mM NaCl, 0.02% sodium azide, 50% glycerol.
Note:	This product is for research use only.