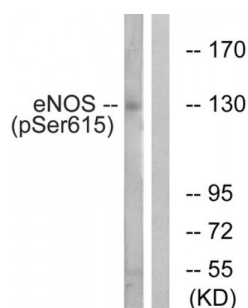


Abbexa Ltd, Innovation Centre, Cambridge Science Park, Cambridge, CB4 0EY, UK
Telephone: +44 (0) 1223 755950 - Fax: +44 (0) 1223 755951 - E-Mail: info@abbexa.com

Nitric Oxide Synthase 3, Endothelial / eNOS (NOS3) Antibody

Catalogue No.: abx012506



Western blot analysis of extracts from K562 cells, treated with EGF (40nM, 30mins), using NOS3 (Phospho-Ser615) antibody.

Rabbit polyclonal antibody against NOS3 protein. Immunogen region is Internal. Specificity is as follows for the reactive species: H:S615, M:S614, R:S614.

Target: NOS3

Reactivity: Human, Mouse, Rat

Host: Rabbit

Clonality: Polyclonal

Tested Applications: ELISA, WB

Recommended dilutions: WB: 1/500 - 1/3000, ELISA: 1/40000. Optimal dilutions/concentrations should be determined by the end user.

Immunogen: The antiserum was produced against synthesized phosphopeptide derived from human eNOS around the phosphorylation site of serine 615 (F-N-SP-I-S).

Purification: Purified from rabbit antiserum by affinity chromatography using epitope-specific immunogen.

Form: Liquid

Isotype: IgG

Conjugation: Unconjugated

Storage: Aliquot and store at -20 °C. Avoid repeated freeze/thaw cycles.

Swiss Prot: [P29474](#)

Buffer: PBS (without Mg^{2+} and Ca^{2+}), pH 7.4, 150 mM NaCl, 0.02% sodium azide, 50% glycerol.

Note: This product is for research use only.