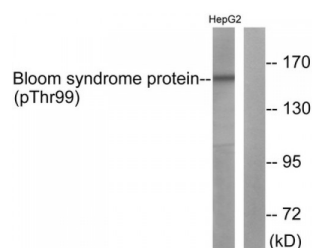


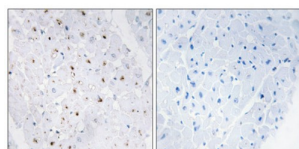
Abbexa Ltd, Innovation Centre, Cambridge Science Park, Cambridge, CB4 0EY, UK  
Telephone: +44 (0) 1223 755950 - Fax: +44 (0) 1223 755951 - E-Mail: [info@abbexa.com](mailto:info@abbexa.com)

## Bloom Syndrome (Phospho-Thr99) Antibody

Catalogue No.: abx012467



Western blot analysis of extracts from HepG2 cells, using Bloom Syndrome Protein (Phospho-Thr99) antibody.



Immunohistochemistry analysis of paraffin-embedded human heart tissue, using Bloom Syndrome Protein (Phospho-Thr99) antibody.

Rabbit polyclonal antibody against Bloom Syndrome protein. Immunogen region is N-terminal. Specificity is as follows for the reactive species: H:T99.

<b>Target:</b>	Bloom Syndrome
<b>Reactivity:</b>	Human
<b>Host:</b>	Rabbit
<b>Clonality:</b>	Polyclonal
<b>Tested Applications:</b>	ELISA, WB, IHC, IF/ICC
<b>Recommended dilutions:</b>	WB: 1/500 - 1/3000, IHC: 1/50 - 1/100, ELISA: 1/40000. Optimal dilutions/concentrations should be determined by the end user.
<b>Immunogen:</b>	The antiserum was produced against synthesized phosphopeptide derived from human Bloom Syndrome Protein around the phosphorylation site of threonine 99 (Q-E-TP-Q-R).
<b>Purification:</b>	Purified from rabbit antiserum by affinity chromatography using epitope-specific immunogen.
<b>Form:</b>	Liquid
<b>Isotype:</b>	IgG

Abbexa Ltd, Innovation Centre, Cambridge Science Park, Cambridge, CB4 0EY, UK  
Telephone: +44 (0) 1223 755950 - Fax: +44 (0) 1223 755951 - E-Mail: [info@abbexa.com](mailto:info@abbexa.com)

**Conjugation:** Unconjugated

**Storage:** Aliquot and store at -20 °C. Avoid repeated freeze/thaw cycles.

**Swiss Prot:** [P54132](#)

**Enzyme Commission Number:** EC 3.6.1.-

**Buffer:** PBS (without  $Mg^{2+}$  and  $Ca^{2+}$ ), pH 7.4, 150 mM NaCl, 0.02% sodium azide, 50% glycerol.

**Note:** This product is for research use only.