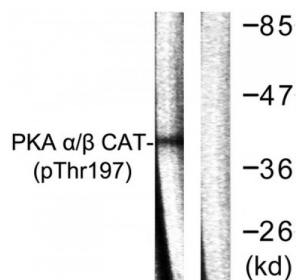
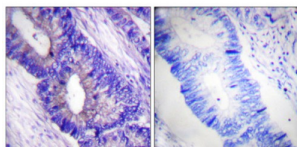
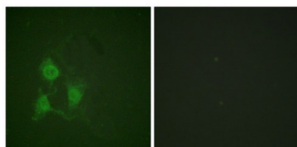


Abbexa Ltd, Innovation Centre, Cambridge Science Park, Cambridge, CB4 0EY, UK
Telephone: +44 (0) 1223 755950 - Fax: +44 (0) 1223 755951 - E-Mail: info@abbexa.com

PKA alpha / beta CAT (Phospho-Thr197) Antibody

Catalogue No.: abx012448



Rabbit polyclonal antibody against PKA alpha/beta CAT protein. Immunogen region is Internal. Specificity is as follows for the reactive species: H:T198, M:T198, R:T198.

Target: PKA alpha/beta CAT

Reactivity: Human, Mouse, Rat

Host: Rabbit

Clonality: Polyclonal

Tested Applications: ELISA, WB, IHC, IF/ICC

Recommended dilutions: WB: 1/500 - 1/3000, IHC: 1/50 - 1/100, IF/ICC: 1/100 - 1/500, ELISA: 1/10000. Optimal dilutions/concentrations should be determined by the end user.

Abbexa Ltd, Innovation Centre, Cambridge Science Park, Cambridge, CB4 0EY, UK
Telephone: +44 (0) 1223 755950 - Fax: +44 (0) 1223 755951 - E-Mail: info@abbexa.com

| | |
|----------------------|--|
| Immunogen: | The antiserum was produced against synthesized phosphopeptide derived from human PKA alpha/beta CAT around the phosphorylation site of threonine 197 (T-W-TP-L-C). |
| Purification: | Purified from rabbit antiserum by affinity chromatography using epitope-specific immunogen. |
| Form: | Liquid |
| Isotype: | IgG |
| Conjugation: | Unconjugated |
| Storage: | Aliquot and store at -20 °C. Avoid repeated freeze/thaw cycles. |
| Swiss Prot: | P17612 P22694 P22612 |
| Buffer: | PBS (without Mg^{2+} and Ca^{2+}), pH 7.4, 150 mM NaCl, 0.02% sodium azide, 50% glycerol. |
| Note: | This product is for research use only. |