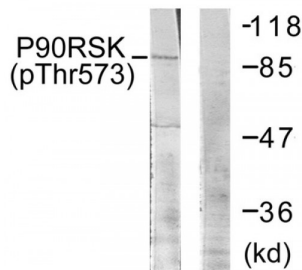


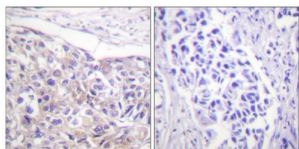
Abbexa Ltd, Innovation Centre, Cambridge Science Park, Cambridge, CB4 0EY, UK  
Telephone: +44 (0) 1223 755950 - Fax: +44 (0) 1223 755951 - E-Mail: [info@abbexa.com](mailto:info@abbexa.com)

## p90 RSK (Phospho-Thr573) Antibody

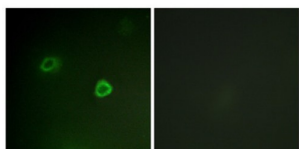
Catalogue No.: abx012445



Western blot analysis of extracts from 293 cells, treated with UV (30mins), using p90 RSK (Phospho-Thr573) antibody.



Immunohistochemistry analysis of paraffin-embedded human breast carcinoma tissue using p90 RSK (Phospho-Thr573) antibody.



Immunofluorescence analysis of COS7 cells, using p90 RSK (Phospho-Thr573) antibody.

Rabbit polyclonal antibody against p90 RSK protein. Immunogen region is C-terminal. Specificity is as follows for the reactive species: H:T573, M:T562, R:T573.

**Target:** p90 RSK

**Reactivity:** Human, Mouse, Rat

**Host:** Rabbit

**Clonality:** Polyclonal

**Tested Applications:** ELISA, WB, IHC, IF/ICC

**Recommended dilutions:** WB: 1/500 - 1/3000, IHC: 1/50 - 1/100, IF/ICC: 1/100 - 1/500, ELISA: 1/5000. Optimal dilutions/concentrations should be determined by the end user.

Abbexa Ltd, Innovation Centre, Cambridge Science Park, Cambridge, CB4 0EY, UK  
Telephone: +44 (0) 1223 755950 - Fax: +44 (0) 1223 755951 - E-Mail: [info@abbexa.com](mailto:info@abbexa.com)

<b>Immunogen:</b>	The antiserum was produced against synthesized phosphopeptide derived from human P90RSK around the phosphorylation site of threonine 573 (L-M-TP-P-C).
<b>Purification:</b>	Purified from rabbit antiserum by affinity chromatography using epitope-specific immunogen.
<b>Form:</b>	Liquid
<b>Isotype:</b>	IgG
<b>Conjugation:</b>	Unconjugated
<b>Storage:</b>	Aliquot and store at -20 °C. Avoid repeated freeze/thaw cycles.
<b>Swiss Prot:</b>	<a href="#"><u>Q15418</u></a>
<b>Enzyme Commission Number:</b>	EC 2.7.11.1
<b>Buffer:</b>	PBS (without Mg <sup>2+</sup> and Ca <sup>2+</sup> ), pH 7.4, 150 mM NaCl, 0.02% sodium azide, 50% glycerol.
<b>Note:</b>	This product is for research use only.