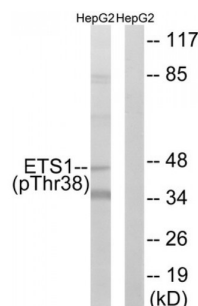


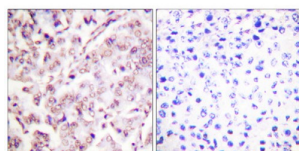
Abbexa Ltd, Innovation Centre, Cambridge Science Park, Cambridge, CB4 0EY, UK
Telephone: +44 (0) 1223 755950 - Fax: +44 (0) 1223 755951 - E-Mail: info@abbexa.com

V-Ets Erythroblastosis Virus E26 Oncogene Homolog 1 (Avian) (ETS1) Antibody

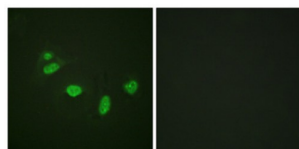
Catalogue No.: abx012437



Western blot analysis of extracts from HepG2 cells, using ETS1 (Phospho-Thr38) antibody.



Immunohistochemistry analysis of paraffin-embedded human breast carcinoma tissue, using ETS1 (Phospho-Thr38) antibody.



Immunofluorescence analysis of HeLa cells, using ETS1 (Phospho-Thr38) antibody.

Rabbit polyclonal antibody against ETS1 protein. Immunogen region is N-terminal. Specificity is as follows for the reactive species: H:T38, M:T38, R:T38.

Target:	ETS1
Reactivity:	Human, Mouse, Rat
Host:	Rabbit
Clonality:	Polyclonal
Tested Applications:	ELISA, WB, IHC, IF/ICC

Recommended dilutions: WB: 1/500 - 1/3000, IHC: 1/50 - 1/100, IF/ICC: 1/100 - 1/500, ELISA: 1/10000. Optimal dilutions/concentrations should be determined by the end user.

Abbexa Ltd, Innovation Centre, Cambridge Science Park, Cambridge, CB4 0EY, UK
Telephone: +44 (0) 1223 755950 - Fax: +44 (0) 1223 755951 - E-Mail: info@abbexa.com

Immunogen:	The antiserum was produced against synthesized phosphopeptide derived from human ETS1 around the phosphorylation site of threonine 38 (L-L-TP-P-S).
Purification:	Purified from rabbit antiserum by affinity chromatography using epitope-specific immunogen.
Form:	Liquid
Isotype:	IgG
Conjugation:	Unconjugated
Storage:	Aliquot and store at -20 °C. Avoid repeated freeze/thaw cycles.
Swiss Prot:	<u>P14921</u>
Buffer:	PBS (without Mg^{2+} and Ca^{2+}), pH 7.4, 150 mM NaCl, 0.02% sodium azide, 50% glycerol.
Note:	This product is for research use only.