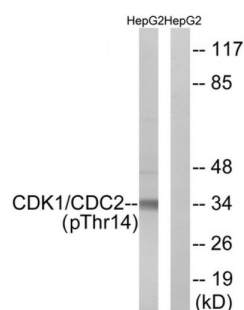


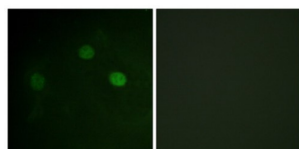
Abbexa Ltd, Innovation Centre, Cambridge Science Park, Cambridge, CB4 0EY, UK
Telephone: +44 (0) 1223 755950 - Fax: +44 (0) 1223 755951 - E-Mail: info@abbexa.com

CDK1 (Phospho-Thr14) Antibody

Catalogue No.: abx012435



Western blot analysis of extracts from HepG2 cells, treated with Forskolin (40nM, 30mins), using CDK1 (Phospho-Thr14) antibody.



Immunofluorescence analysis of COS7 cells, using CDK1 (Phospho-Thr14) antibody.

Rabbit polyclonal antibody against CDK1 protein. Immunogen region is N-terminal. Specificity is as follows for the reactive species: H:T14, M:T14, R:T14.

Target:	CDK1
Reactivity:	Human, Mouse, Rat
Host:	Rabbit
Clonality:	Polyclonal
Tested Applications:	ELISA, WB, IF/ICC
Recommended dilutions:	WB: 1/500 - 1/3000, IF/ICC: 1/100 - 1/500, ELISA: 1/1000. Optimal dilutions/concentrations should be determined by the end user.
Immunogen:	The antiserum was produced against synthesized phosphopeptide derived from human CDK1/CDC2 around the phosphorylation site of threonine 14 (E-G-TP-Y-G).
Purification:	Purified from rabbit antiserum by affinity chromatography using epitope-specific immunogen.
Form:	Liquid
Isotype:	IgG

Abbexa Ltd, Innovation Centre, Cambridge Science Park, Cambridge, CB4 0EY, UK
Telephone: +44 (0) 1223 755950 - Fax: +44 (0) 1223 755951 - E-Mail: info@abbexa.com

Conjugation: Unconjugated

Storage: Aliquot and store at -20 °C. Avoid repeated freeze/thaw cycles.

Swiss Prot: [P06493](#) [P24941](#) [Q00526](#)

Enzyme Commission Number: EC 2.7.11.22::EC 2.7.11.23

Buffer: PBS (without Mg^{2+} and Ca^{2+}), pH 7.4, 150 mM NaCl, 0.02% sodium azide, 50% glycerol.

Note: This product is for research use only.