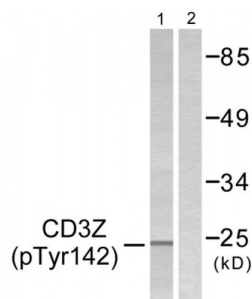


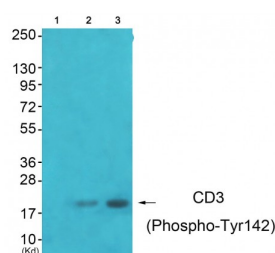
Abbexa Ltd, Innovation Centre, Cambridge Science Park, Cambridge, CB4 0EY, UK
Telephone: +44 (0) 1223 755950 - Fax: +44 (0) 1223 755951 - E-Mail: info@abbexa.com

CD3 zeta (Phospho-Tyr142) Antibody

Catalogue No.: abx012434



Western blot analysis of extracts from Jurkat cells treated with UV for 15 mins, using CD3 zeta (Phospho-Tyr142) antibody. The lane on the right is treated with blocking peptide.



Western blot analysis of extracts from JK cells (Lane 2) and K562 cells (Lane 3), using CD3 zeta (Phospho-Tyr142) antibody. Lane 1 is treated with blocking peptide.

Rabbit polyclonal antibody against CD3 zeta protein.

Target: CD3 zeta

Reactivity: Human, Mouse

Host: Rabbit

Clonality: Polyclonal

Tested Applications: ELISA, WB

Recommended dilutions: WB: 1/500 - 1/3000, ELISA: 1/1000. Optimal dilutions/concentrations should be determined by the end user.

Immunogen: The antiserum was produced against synthesized phosphopeptide derived from human CD3 zeta around the phosphorylation site of tyrosine 142 (G-L-YP-Q-G).

Purification: Purified from rabbit antiserum by affinity chromatography using epitope-specific immunogen.

Form: Liquid

Isotype: IgG

Conjugation: Unconjugated

Abbexa Ltd, Innovation Centre, Cambridge Science Park, Cambridge, CB4 0EY, UK
Telephone: +44 (0) 1223 755950 - Fax: +44 (0) 1223 755951 - E-Mail: info@abbexa.com

Storage: Aliquot and store at -20 °C. Avoid repeated freeze/thaw cycles.

Swiss Prot: [P20963](#)

Concentration: 1 mg/ml

Buffer: PBS (without Mg²⁺ and Ca²⁺), pH 7.4, 150 mM NaCl, 0.02% sodium azide, 50% glycerol.

Note: This product is for research use only.