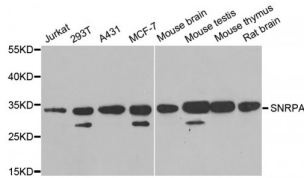


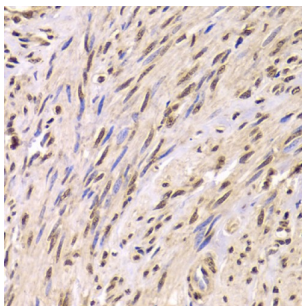
Abbexa Ltd, Innovation Centre, Cambridge Science Park, Cambridge, CB4 0EY, UK  
 Telephone: +44 (0) 1223 755950 - Fax: +44 (0) 1223 755951 - E-Mail: info@abbexa.com

## U1 Small Nuclear Ribonucleoprotein A (SNRPA) Antibody

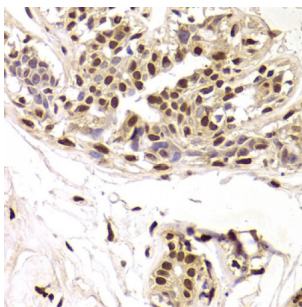
Catalogue No.: abx004904



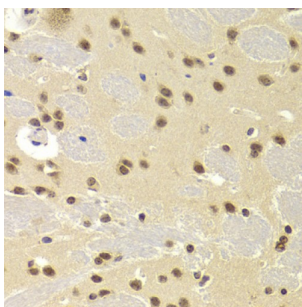
Western blot analysis of extracts of various cell lines, using SNRPA antibody (abx004904) at 1/1000 dilution.



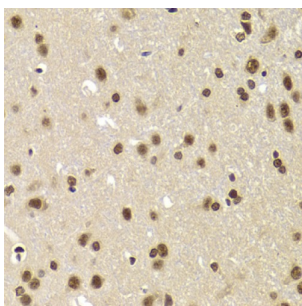
Immunohistochemistry of paraffin-embedded human adenomyosis using SNRPA Antibody (abx004904) at dilution of 1/100 (40x lens).



Immunohistochemistry of paraffin-embedded human breast using SNRPA Antibody (abx004904) at dilution of 1/100 (40x lens).

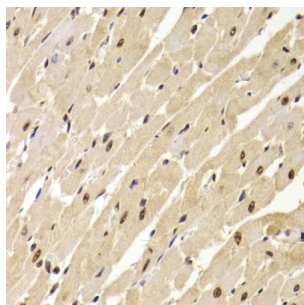


Immunohistochemistry of paraffin-embedded mouse brain using SNRPA Antibody (abx004904) at dilution of 1/100 (40x lens).

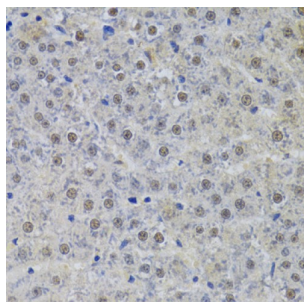


Immunohistochemistry of paraffin-embedded rat brain using SNRPA Antibody (abx004904) at dilution of 1/100 (40x lens).

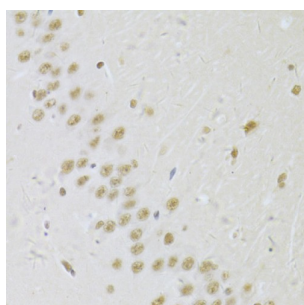
Abbexa Ltd, Innovation Centre, Cambridge Science Park, Cambridge, CB4 0EY, UK  
Telephone: +44 (0) 1223 755950 - Fax: +44 (0) 1223 755951 - E-Mail: info@abbexa.com



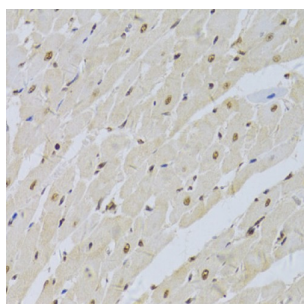
Immunohistochemistry of paraffin-embedded rat heart using SNRPA Antibody (abx004904) at dilution of 1/100 (40x lens).



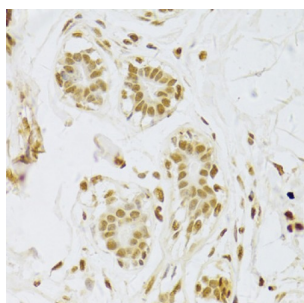
Immunohistochemistry of paraffin-embedded rat liver using SNRPA Antibody (abx004904) at dilution of 1/100 (40x lens).



Immunohistochemistry of paraffin-embedded rat brain using SNRPA Antibody (abx004904) at dilution of 1/100 (40x lens).

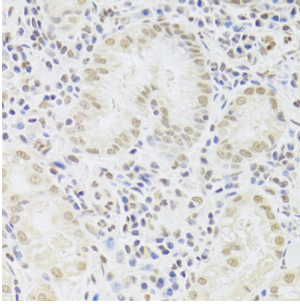


Immunohistochemistry of paraffin-embedded rat heart using SNRPA Antibody (abx004904) at dilution of 1/100 (40x lens).

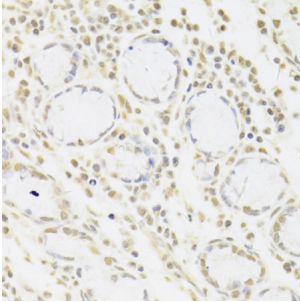


Immunohistochemistry of paraffin-embedded human breast using SNRPA Antibody (abx004904) at dilution of 1/100 (40x lens).

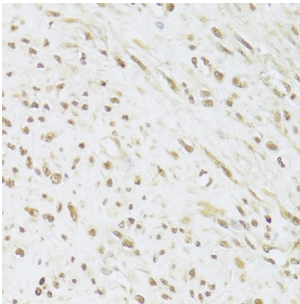
Abbexa Ltd, Innovation Centre, Cambridge Science Park, Cambridge, CB4 0EY, UK  
Telephone: +44 (0) 1223 755950 - Fax: +44 (0) 1223 755951 - E-Mail: info@abbexa.com



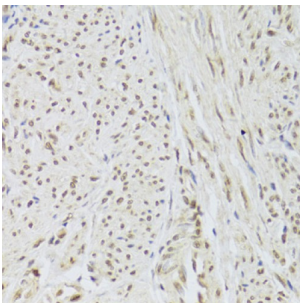
Immunohistochemistry of paraffin-embedded human stomach using SNRPA Antibody (abx004904) at dilution of 1/100 (40x lens).



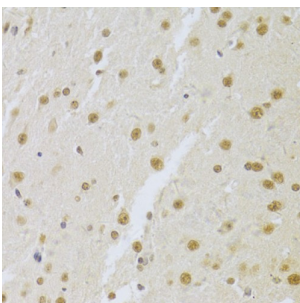
Immunohistochemistry of paraffin-embedded human gastric cancer using SNRPA Antibody (abx004904) at dilution of 1/100 (40x lens).



Immunohistochemistry of paraffin-embedded human leiomyoma of uterus using SNRPA Antibody (abx004904) at dilution of 1/100 (40x lens).

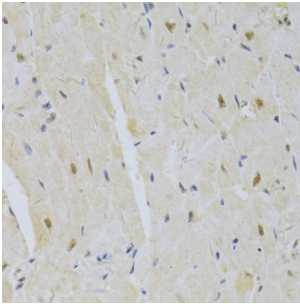


Immunohistochemistry of paraffin-embedded human adenomyosis using SNRPA Antibody (abx004904) at dilution of 1/100 (40x lens).

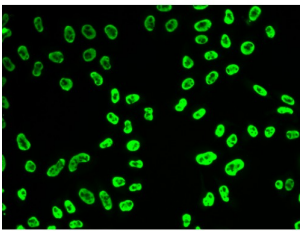


Immunohistochemistry of paraffin-embedded mouse brain using SNRPA Antibody (abx004904) at dilution of 1/100 (40x lens).

Abbexa Ltd, Innovation Centre, Cambridge Science Park, Cambridge, CB4 0EY, UK  
Telephone: +44 (0) 1223 755950 - Fax: +44 (0) 1223 755951 - E-Mail: info@abbexa.com



Immunohistochemistry of paraffin-embedded mouse heart using SNRPA Antibody (abx004904) at dilution of 1/100 (40x lens).



Immunofluorescence analysis of HeLa cells using SNRPA antibody (abx004904).

SNRPA Antibody is a Rabbit Polyclonal antibody against SNRPA. The protein encoded by this gene associates with stem loop II of the U1 small nuclear ribonucleoprotein, which binds the 5' splice site of precursor mRNAs and is required for splicing. The encoded protein autoregulates itself by polyadenylation inhibition of its own pre-mRNA via dimerization and has been implicated in the coupling of splicing and polyadenylation.

**Target:** SNRPA

**Reactivity:** Human, Mouse, Rat

**Host:** Rabbit

**Clonality:** Polyclonal

**Tested Applications:** WB, IHC, IF/ICC

**Recommended dilutions:** WB: 1/500 - 1/2000, IHC: 1/50 - 1/200, IF/ICC: 1/50 - 1/200. Optimal dilutions/concentrations should be determined by the end user.

**Immunogen:** Recombinant protein of human SNRPA.

**Purification:** Affinity purified.

**Form:** Liquid

**Isotype:** IgG

**Conjugation:** Unconjugated

Abbexa Ltd, Innovation Centre, Cambridge Science Park, Cambridge, CB4 0EY, UK  
Telephone: +44 (0) 1223 755950 - Fax: +44 (0) 1223 755951 - E-Mail: [info@abbexa.com](mailto:info@abbexa.com)

**Storage:** Aliquot and store at -20 °C. Avoid repeated freeze/thaw cycles.

**Molecular Weight:** Calculated MW: 31 kDa  
Observed MW: 33 kDa

**Swiss Prot:** [P09012](#)

**GeneID:** [6626](#)

**Gene Symbol:** SNRPA

**Concentration:** > 1 mg/ml

**Buffer:** PBS, pH 7.3, 0.02% sodium azide, 50% glycerol.

**Note:** This product is for research use only.