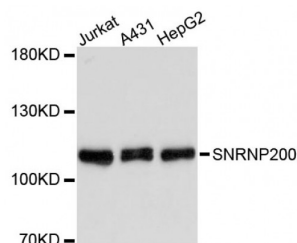


Small Nuclear Ribonucleoprotein U5 Subunit 200 (SNRNP200) Antibody

Catalogue No.: abx004666



Western blot analysis of extracts of various cell lines, using SNRNP200 antibody (abx004666) at 1:3000 dilution.

SNRNP200 Antibody is a Rabbit Polyclonal antibody against SNRNP200. Pre-mRNA splicing is catalyzed by the spliceosome, a complex of specialized RNA and protein subunits that removes introns from a transcribed pre-mRNA segment. The spliceosome consists of small nuclear RNA proteins (snRNPs) U1, U2, U4, U5 and U6, together with approximately 80 conserved proteins. U5 snRNP contains nine specific proteins. This gene encodes one of the U5 snRNP-specific proteins. This protein belongs to the DEXH-box family of putative RNA helicases. It is a core component of U4/U6-U5 snRNPs and appears to catalyze an ATP-dependent unwinding of U4/U6 RNA duplexes. Mutations in this gene cause autosomal-dominant retinitis pigmentosa. Alternatively spliced transcript variants encoding different isoforms have been found, but the full-length nature of these variants has not been determined.

Target: SNRNP200

Reactivity: Human

Host: Rabbit

Clonality: Polyclonal

Tested Applications: WB

Recommended dilutions: WB: 1/500 - 1/2000. Optimal dilutions/concentrations should be determined by the end user.

Immunogen: Recombinant protein of human SNRNP200.

Purification: Affinity purified.

Form: Liquid

Isotype: IgG

Conjugation: Unconjugated

Storage: Aliquot and store at -20 °C. Avoid repeated freeze/thaw cycles.

Abbexa Ltd, Innovation Centre, Cambridge Science Park, Cambridge, CB4 0EY, UK
Telephone: +44 (0) 1223 755950 - Fax: +44 (0) 1223 755951 - E-Mail: info@abbexa.com

| | |
|--------------------------|---|
| Molecular Weight: | Calculated MW: 71 kDa/244 kDa Observed MW: 244 kDa |
| Swiss Prot: | <u>O75643</u> |
| GeneID: | <u>23020</u> |
| Gene Symbol: | SNRNP200 |
| Concentration: | > 1 mg/ml |
| Buffer: | PBS, pH 7.3, 0.02% sodium azide, 50% glycerol. |
| Note: | This product is for research use only. |