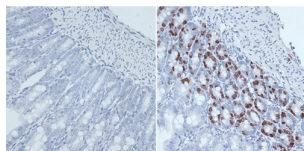


Abbexa Ltd, Innovation Centre, Cambridge Science Park, Cambridge, CB4 0EY, UK
Telephone: +44 (0) 1223 755950 - Fax: +44 (0) 1223 755951 - E-Mail: info@abbexa.com

Bromodeoxyuridine (BrdU) Antibody

Catalogue No.: abx000064



Immunohistochemistry of paraffin-embedded mouse jejunum using BrdU antibody (abx000064) at dilution of 1:300 (40x lens).

BrdU Antibody is a Mouse Monoclonal antibody against BrdU. The halogenated pyrimidine thymidine analog bromodeoxyuridine (BrdU) is incorporated into newly synthesized DNA strands of S phase cells and is useful for estimating the fraction of cells in S phase. Additionally, the analysis of the uptake of BrdU is a reliable method to quantitate the degree of DNA synthesis. BrdU is also useful for studying sister chromatid exchange and to isolate nascent DNA. UV-induced excision-repair synthesis is one method for incorporating BrdU into cellular DNA. Anti-BrdU antibodies bind to the exposed BrdU in single-stranded DNA after a hydrochloric acid denaturation step or nuclease digestion. Protease antigen recovery is necessary for most tissues or cells fixed with cross-linking agents such as formalin but may decrease the specificity of BrdU immunodetection. The monoclonal antibody Bu20a against BrdU stains BrdU incorporated into the nuclei of a wide range of proliferating cell types including human tumors growing in nude mice and tonsil lymphoid.

Target:	BrdU
Reactivity:	Mouse
Host:	Mouse
Clonality:	Monoclonal
Tested Applications:	IHC, IF/ICC

Recommended dilutions: IHC: 1/50 - 1/500, IF/ICC: 1/50 - 1/500, IF/ICC: 1/50 - 1/500. Optimal dilutions/concentrations should be determined by the end user.

Immunogen: Synthetic Compound. Bromodeoxyuridine.

Purification: Affinity purified.

Form: Liquid

Isotype: IgG

Conjugation: Unconjugated

Abbexa Ltd, Innovation Centre, Cambridge Science Park, Cambridge, CB4 0EY, UK
Telephone: +44 (0) 1223 755950 - Fax: +44 (0) 1223 755951 - E-Mail: info@abbexa.com

Storage: Aliquot and store at -20 °C. Avoid repeated freeze/thaw cycles.

Gene Symbol: BrdU

Concentration: > 1 mg/ml

Buffer: PBS, pH 7.3, 0.02% sodium azide, 50% glycerol.

Note: This product is for research use only.