

Synonym

Spike,S2 protein,Spike glycoprotein Subunit2,S glycoprotein Subunit2,Spike protein S2,COVID-19

Source

SARS-CoV-2 S2 protein, His Tag (S2N-C52H5) is expressed from human 293 cells (HEK293). It contains AA Ser 686 - Pro 1213 (Accession # [QHD43416.1](#)). Proline substitutions (F817P, A892P, A899P, A942P, K986P, V987P) are introduced to prevent the formation of aggregates in the course of protein production.

Molecular Characterization

This protein carries a polyhistidine tag at the C-terminus.

The protein has a calculated MW of 60.0 kDa. The protein migrates as 70-90 kDa under reducing (R) condition (SDS-PAGE) due to glycosylation.

Endotoxin

Less than 1.0 EU per µg by the LAL method.

Purity

>95% as determined by SDS-PAGE.

Formulation

Lyophilized from 0.22 µm filtered solution in PBS, pH7.4. Normally trehalose is added as protectant before lyophilization.

Contact us for customized product form or formulation.

Reconstitution

Please see Certificate of Analysis for specific instructions.

*For best performance, we strongly recommend you to follow the reconstitution protocol provided in the CoA.*

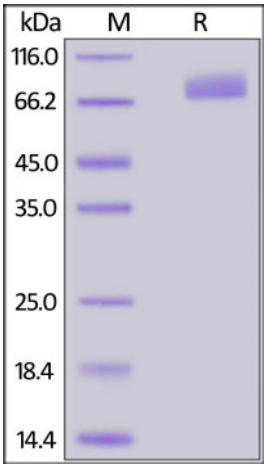
Storage

For long term storage, the product should be stored at lyophilized state at -20°C or lower.

*Please avoid repeated freeze-thaw cycles.*

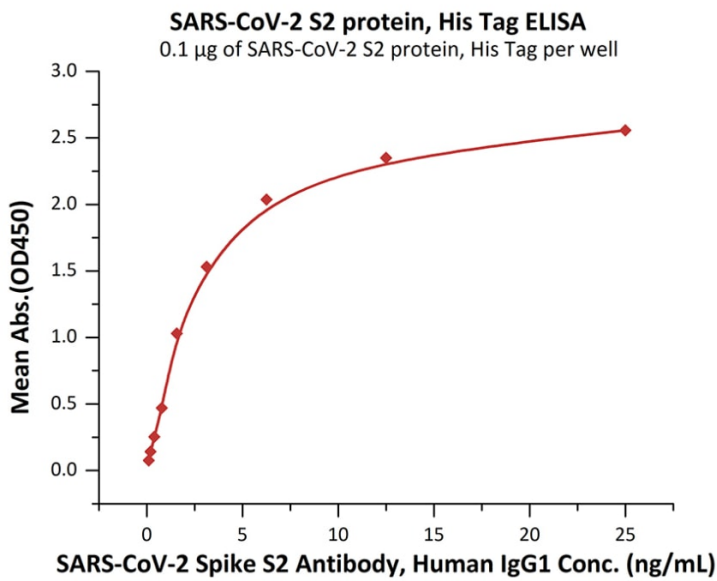
- This product is stable after storage at:
- -20°C to -70°C for 12 months in lyophilized state;
  - -70°C for 3 months under sterile conditions after reconstitution.

SDS-PAGE



SARS-CoV-2 S2 protein, His Tag on SDS-PAGE under reducing (R) condition. The gel was stained overnight with Coomassie Blue. The purity of the protein is greater than 95%.

Bioactivity-ELISA



Immobilized SARS-CoV-2 S2 protein, His Tag (Cat. No. [S2N-C52H5](#)) at 1 µg/mL (100 µL/well) can bind SARS-CoV-2 Spike S2 Antibody, Human IgG1 with a linear range of 0.1-3 ng/mL (QC tested).

Background

It's been reported that SARS-CoV-2 can infect the human respiratory epithelial cells through interaction with the human ACE2 receptor. The spike protein is a large type I transmembrane protein containing two subunits, S1 and S2. S1 mainly contains a receptor binding domain (RBD), which is responsible for recognizing the cell surface receptor. S2 contains basic elements needed for the membrane fusion. The S protein plays key parts in the induction of neutralizing-antibody and T-cell responses, as well as protective immunity.

References

(1) [Wan Y, et al. J Virol. 2020. pii: JVI.00127-20.](#)  
(2) [Benvenuto D, et al. J Med Virol. 2020.](#)  
(3) [Chang CY, et al. AMB Express. 2020. 10\(1\):20.](#)

Please contact us via [TechSupport@acrobiosystems.com](mailto:TechSupport@acrobiosystems.com) if you have any question on this product.