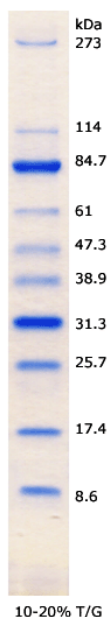


EzWay™ Protein-PreBlue MW Marker

1. **Catalog No.** K18000
2. **Quantity** 400 ul (80 mini-gels, ready-to-use)
3. **Description** EzWay™ Protein-PreBlue MW Marker is mixture of purified proteins coupled to a blue dye that resolves to 10 bands during electrophoresis. It allows easy visualization of the MW of proteins and evaluation of the blotting efficiency.
- Pre-stained bands for evaluation of the transfer efficiency
 - Contains 10 native proteins
 - Extra intense on 2-bands for easy identification
 - No lot-to-lot variation
 - Ready-to-use
4. **MW Range** 8.6 - 273 kDa
5. **No. of Applications** 80 mini-gels (5 ul each)
6. **Storage and Shelf life** 1 year at -20°C

7. Contents



MW (kD)	Protein
273	Myosin heavy chain
114	b-galactosidase
84.7*	Bovine Serum Albumin
61	Glutamic dehydrogenase
47.3	Ovalbumin
38.9	Glyceraldehyde-3-phospho dehydrogenase
31.3*	Carbonic anhydrase
25.7	Soybean trypsin inhibitor
17.4	Lysozyme
8.6	Aprotinin

* Band intensity on Bovine serum albumin and Carbonic anhydrase

8. **How to use** Before using, dissolve sediment warming by hand for about 1 minute and mixing lightly, and then load directly 5 ul on to a mini-gel. Please store the vial in a freezer promptly after use.
9. **Note** This marker is not suitable for determination of exact MW.

For research use only; not for use as a diagnostic

