



Diacclone

## DIACLONE Immunology Products

### Anti-Human CD14 PE Conjugated

Clone: 8G3

**CATALOGUE N° :** 954.772.010

**CLONE :** 8G3

**ISOTYPE :** Mouse IgG2a

**IMMUNISATION :** Monocytes

**HYBRIDOMA :** Myeloma SP2/O x Balb/c spleen cells

**SPECIFICITY :** Recognises the lipopolysaccharide receptor (LPS R), a 55 kDa protein

**QUANTITY :** 100 tests / 1ml

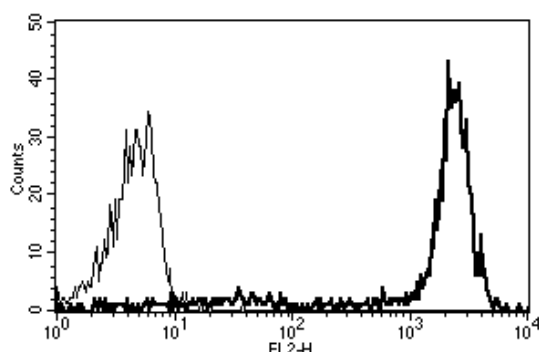
**PURIFICATION :** Ion exchange chromatography

**FORMAT :** Phosphate-buffered saline with 5% BSA and 0.1% sodium azide

**WORKING DILUTION :** Reconstitute with 1 ml deionised water  
Use 10 µl to label  $10^6$  cells or 100 µl of whole blood

**STORAGE :** Stable at +2-8°C for six months after reconstitution  
DO NOT FREEZE

**APPLICATION :** Suitable for flow cytometry



A typical staining pattern with the 8G3 monoclonal antibody of monocytes

 Sodium azide is a poisonous and hazardous substance, handle and dispose of properly

Version 3 - 08.09

For research use only

### 25 YEARS OF EXPERTISE

With over 25 years experience and extensive expertise we are committed to providing excellence in Monoclonal Antibody and Immunoassay development.

The expanding range of Diacclone Immunology products is specifically designed to advance research applications.

Our experience and expertise coupled to the diversity of our product range makes Diacclone a clear choice to

### Fast Track Your Research...

#### DIACLONE PRODUCTS



Monoclonal Antibodies



ELISA



ELISpot



DIAplex

#### DIACLONE SAS

1 Boulevard A. Fleming – BP 1985  
25020 Besançon cedex – France  
Tel: +33 (0)3 81 41 38 38  
Fax: +33 (0)3 81 41 36 36  
info@diacclone.com



[www.diacclone.com](http://www.diacclone.com)