



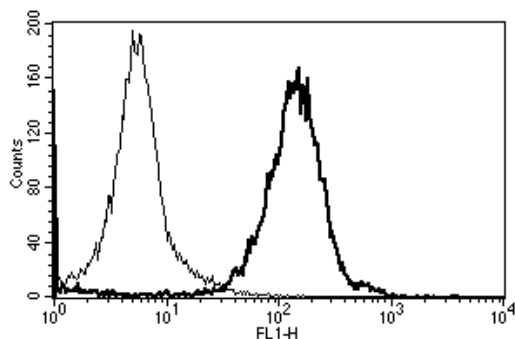
Diacclone

DIACLONE Immunology Products

Anti-Human HLA Class I Azide Free

Clone: W6/32

CATALOGUE N° :	857.220.000
CLONE :	W6/32
ISOTYPE :	Mouse IgG2a
IMMUNISATION :	U937 cell line
HYBRIDOMA :	Myeloma X63/AG.8653 x Balb/c spleen cells
SPECIFICITY :	Recognises an antigenic determinant shared among products of the HLA-A, -B and -C loci
QUANTITY :	200 µg / 200 µl
PURIFICATION :	Affinity chromatography on Protein A
FORMAT :	Phosphate-buffered saline. Sterile-filtered through 0.22 µm. Carrier and preservative free
STORAGE :	Stable at +2-8°C for 1 month For longer storage, freeze aliquots
APPLICATION :	Suitable for flow cytometry Blocks the interaction between T cells and MHC molecules Immunoprecipitation : not tested Western blot : not tested Immunohistochemistry : not tested



A typical staining pattern with the W6/32 monoclonal antibody of lymphocytes

Version 2 - 05.10

For research use only

25 YEARS OF EXPERTISE

With over 25 years experience and extensive expertise we are committed to providing excellence in Monoclonal Antibody and Immunoassay development.

The expanding range of Diacclone Immunology products is specifically designed to advance research applications.

Our experience and expertise coupled to the diversity of our product range makes Diacclone a clear choice to

Fast Track Your Research...

DIACLONE PRODUCTS



Monoclonal Antibodies



ELISA



ELISpot



DIAPlex

DIACLONE SAS

1 Boulevard A. Fleming – BP 1985
25020 Besançon cedex – France
Tel: +33 (0)3 81 41 38 38
Fax: +33 (0)3 81 41 36 36
info@diacclone.com



www.diacclone.com