



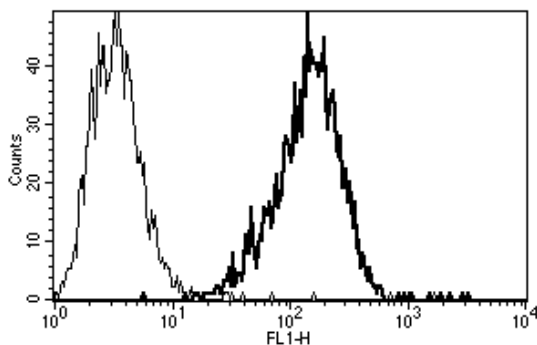
Diacclone

## DIACLONE Immunology Products

### Anti-Human CD75 Azide Free

Clone: B-L5

<b>CATALOGUE N° :</b>	854.420.000
<b>CLONE :</b>	B-L5
<b>ISOTYPE :</b>	Mouse IgM
<b>IMMUNISATION :</b>	Raji cell line
<b>HYBRIDOMA :</b>	Myeloma X63/AG.8653 x Balb/c spleen cells
<b>SPECIFICITY :</b>	Recognises lactosamines
<b>WORKSHOP :</b>	IV
<b>QUANTITY :</b>	200 µg / 200 µl (Discovery Size also available please enquire)
<b>PURIFICATION :</b>	Gel filtration
<b>FORMAT :</b>	Phosphate-buffered saline. Sterile-filtered through 0.22 µm. Carrier and preservative free
<b>STORAGE :</b>	Stable at +2-8°C for 12 months For longer storage, freeze aliquots
<b>APPLICATION :</b>	Biological activity : not tested Immunoprecipitation : not tested Western Blot : not tested Immunohistochemistry : not tested



A typical staining pattern with the B-L5 monoclonal antibody of Raji cell line

Version 3 - 01.11

For research use only

### 25 YEARS OF EXPERTISE

With over 25 years experience and extensive expertise we are committed to providing excellence in Monoclonal Antibody and Immunoassay development.

The expanding range of Diacclone Immunology products is specifically designed to advance research applications.

Our experience and expertise coupled to the diversity of our product range makes Diacclone a clear choice to

### Fast Track Your Research...

#### DIACLONE PRODUCTS



Monoclonal Antibodies



ELISA



ELISpot



DIAplex

#### DIACLONE SAS

1 Boulevard A. Fleming – BP 1985  
25020 Besançon cedex – France  
Tel: +33 (0)3 81 41 38 38  
Fax: +33 (0)3 81 41 36 36  
info@diacclone.com



[www.diacclone.com](http://www.diacclone.com)