



Diacclone

## DIACLONE Immunology Products

### Anti-Human CD40 Azide Free

Clone: B-B20

<b>CATALOGUE N° :</b>	854.280.000
<b>CLONE :</b>	B-B20
<b>ISOTYPE :</b>	Mouse IgG1
<b>IMMUNISATION :</b>	Raji cell line
<b>HYBRIDOMA :</b>	Myeloma X63/AG.8653 x Balb/c spleen cells
<b>SPECIFICITY :</b>	Recognises the Bp50 antigen, a 48 kDa protein
<b>WORKSHOP :</b>	VI
<b>QUANTITY :</b>	200 µg / 200 µl (Discovery Size also available please enquire)
<b>PURIFICATION :</b>	Ion exchange chromatography
<b>FORMAT :</b>	Phosphate-buffered saline. Sterile-filtered through 0.22 µm. Carrier and preservative free
<b>STORAGE :</b>	Stable at +2-8°C for 12 months For longer storage, freeze aliquots
<b>APPLICATION :</b>	Suitable for immunochemistry on frozen section Suitable for flow cytometry Stimulates B-cell proliferation together with IL-4 Immunoprecipitation : not tested Western blot : not tested
<b>REFERENCES :</b>	Challa A. et al., BC12 Leucocyte Typing Workshop VI, Kobe (1996) De Goer de Herve M-G. et al., Blood, 2005; 106(8) : 2806-14 Durali D. et al., Blood, 2003; 102 : 4084-4089 Jeannin, P. et al., J Biol Chem, 1997; 272(25): 15613-9. Kotowicz K. et al., BC12.1 Leucocyte Typing Workshop VI, Kobe (1996) Puig-Kröger A. et al., Blood, 2001; 98 : 2175 - 2182 Vermot-Desroches C. et al., Immunology Letters 48 : 1-9 (1995)

### 25 YEARS OF EXPERTISE

With over 25 years experience and extensive expertise we are committed to providing excellence in Monoclonal Antibody and Immunoassay development.

The expanding range of Diacclone Immunology products is specifically designed to advance research applications.

Our experience and expertise coupled to the diversity of our product range makes Diacclone a clear choice to

### Fast Track Your Research...

#### DIACLONE PRODUCTS



Monoclonal Antibodies



ELISA



ELISpot



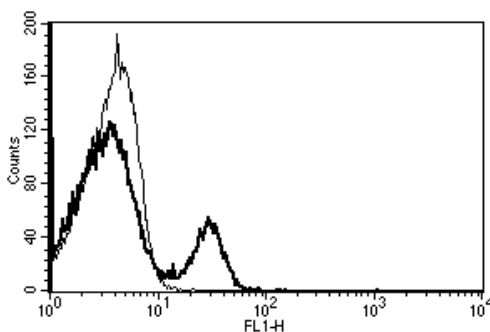
DIAplex

#### DIACLONE SAS

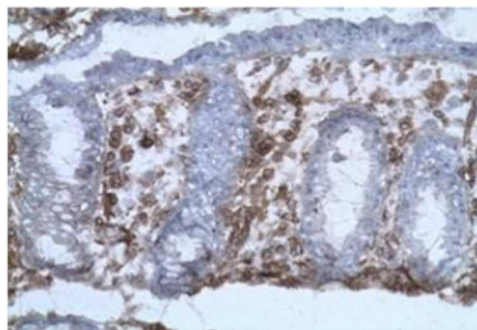
1 Boulevard A. Fleming – BP 1985  
25020 Besançon cedex – France  
Tel: +33 (0)3 81 41 38 38  
Fax: +33 (0)3 81 41 36 36  
info@diacclone.com



[www.diacclone.com](http://www.diacclone.com)



A typical staining pattern with the B-B20 monoclonal antibody of lymphocytes



Labelling on frozen section (acetone fixed) of human colic mucosa with B-B20 diluted at 1:100 (background coloration by hematoxylin).