



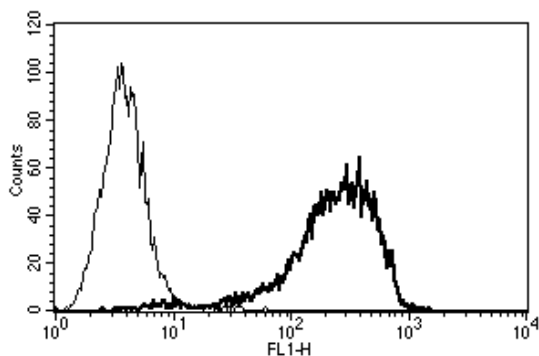
Diacclone

## DIACLONE Immunology Products

### Anti-Human CD138 Azide Free

Clone: B-A38

<b>CATALOGUE N° :</b>	854.070.000
<b>CLONE :</b>	B-A38
<b>ISOTYPE :</b>	Mouse IgG1
<b>IMMUNISATION :</b>	U266 cell line
<b>HYBRIDOMA :</b>	Myeloma X63/AG.8653 x Balb/c spleen cells
<b>SPECIFICITY :</b>	Recognises Syndecan-1, the heparan sulfate proteoglycan, a 65-70 kDa protein
<b>QUANTITY :</b>	200 µg / 200 µl (Discovery Size also available please enquire)
<b>PURIFICATION :</b>	Ion exchange chromatography
<b>FORMAT :</b>	Phosphate-buffered saline. Sterile-filtered through 0.22 µm. Carrier and preservative free
<b>STORAGE :</b>	Stable at +2-8°C for 12 months For longer storage, freeze aliquots
<b>APPLICATION :</b>	Suitable for flow cytometry Recognises the human syndecan-1 Biological activity : not tested Immunoprecipitation : not tested Western Blot : not tested Suitable for immunohistochemistry (recommended dilution 1:50)
<b>REFERENCES :</b>	Yang, Y. et al., Blood,2007;110(6):2041-8



A typical staining pattern with the B-A38 monoclonal antibody of U266 cell line

Version 5 - 04.13

For research use only

### 25 YEARS OF EXPERTISE

With over 25 years experience and extensive expertise we are committed to providing excellence in Monoclonal Antibody and Immunoassay development.

The expanding range of Diacclone Immunology products is specifically designed to advance research applications.

Our experience and expertise coupled to the diversity of our product range makes Diacclone a clear choice to

### Fast Track Your Research...

#### DIACLONE PRODUCTS



Monoclonal Antibodies



ELISA



ELISpot



DIAplex

#### DIACLONE SAS

1 Boulevard A. Fleming – BP 1985  
25020 Besançon cedex – France  
Tel: +33 (0)3 81 41 38 38  
Fax: +33 (0)3 81 41 36 36  
info@diacclone.com



[www.diacclone.com](http://www.diacclone.com)