



Diacclone

DIACLONE Immunology Products

Anti-Human CD62L Azide Free

Clone: B-S13

CATALOGUE N° :	852.780.000
CLONE :	B-S13
ISOTYPE :	Mouse IgG1
IMMUNISATION :	CD62L transfected CHO cell line
HYBRIDOMA :	Myeloma X63/AG.8653 x Balb/c spleen cells
SPECIFICITY :	Recognises the Leucocyte Endothelial Cell Adhesion Molecule-1 (LECAM-1), L-selectin, a 74-95 kDa protein
QUANTITY :	200 µg / 200 µl (Discovery Size also available please enquire)
PURIFICATION :	Ion exchange chromatography
FORMAT :	Phosphate-buffered saline. Sterile-filtered through 0.22 µm. Carrier and preservative free
STORAGE :	Stable at +2-8°C for 12 months For longer storage, freeze aliquots
APPLICATION :	Suitable for flow cytometry Biological activity : not tested Immunoprecipitation : not tested Western Blot : not tested Immunohistochemistry : not tested Recognises the soluble antigen

25 YEARS OF EXPERTISE

With over 25 years experience and extensive expertise we are committed to providing excellence in Monoclonal Antibody and Immunoassay development.

The expanding range of Diacclone Immunology products is specifically designed to advance research applications.

Our experience and expertise coupled to the diversity of our product range makes Diacclone a clear choice to

Fast Track Your Research...

DIACLONE PRODUCTS



Monoclonal Antibodies



ELISA



ELISpot



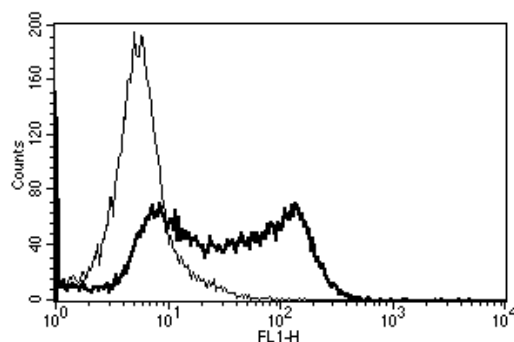
DIAPlex

DIACLONE SAS

1 Boulevard A. Fleming – BP 1985
25020 Besançon cedex – France
Tel: +33 (0)3 81 41 38 38
Fax: +33 (0)3 81 41 36 36
info@diacclone.com



www.diacclone.com



A typical staining pattern with the B-S13 monoclonal antibody of lymphocytes

Version 3 - 01.11

For research use only