



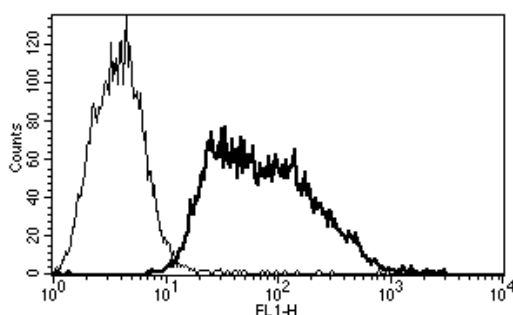
Diacclone

DIACLONE Immunology Products

Anti-Human CD62E Azide Free

Clone: B-P7

CATALOGUE N° :	852.730.000
CLONE :	B-P7
ISOTYPE :	Mouse IgG1
IMMUNISATION :	Activated human endothelial cells
HYBRIDOMA :	Myeloma X63/AG.8653 x Balb/c spleen cells
SPECIFICITY :	Recognises the Endothelial Leucocyte Adhesion Molecule-1 (ELAM-1), E-selectin, a 97 kDa protein
WORKSHOP :	VI
QUANTITY :	200 µg / 200 µl (Discovery Size also available please enquire)
PURIFICATION :	Ion exchange chromatography
FORMAT :	Phosphate-buffered saline. Sterile-filtered through 0.22 µm. Carrier and preservative free
STORAGE :	Stable at +2-8°C for 12 months For longer storage, freeze aliquots
APPLICATION :	Suitable for flow cytometry Biological activity : not tested Not suitable for immunoprecipitation Western blot : not tested Immunohistochemistry : not tested Recognises the soluble antigen
OTHER :	Ref : Vermot-Desroches C. et al, Immunology Letters. 48 : 1-9 (1995) Vermot-Desroches C. et al, AS22.1 Leucocyte Typing Workshop VI, Kobe (1996)



A typical staining pattern with the B-P7 monoclonal antibody of ELAM-1 transfected CHO cell line

Version 3 - 01.11

For research use only

25 YEARS OF EXPERTISE

With over 25 years experience and extensive expertise we are committed to providing excellence in Monoclonal Antibody and Immunoassay development.

The expanding range of Diacclone Immunology products is specifically designed to advance research applications.

Our experience and expertise coupled to the diversity of our product range makes Diacclone a clear choice to

Fast Track Your Research...

DIACLONE PRODUCTS



Monoclonal Antibodies



ELISA



ELISpot



DIApex

DIACLONE SAS

1 Boulevard A. Fleming – BP 1985
25020 Besançon cedex – France
Tel: +33 (0)3 81 41 38 38
Fax: +33 (0)3 81 41 36 36
info@diacclone.com



www.diacclone.com