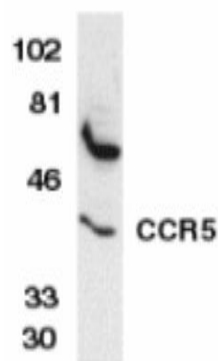


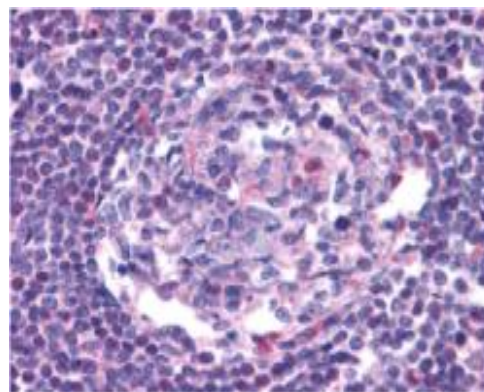
CCR5 (NT), Human pAb

Catalog No.	PX164A PX164B	Quantity:	100 µg 0.5 mg
Description:	This product detects CCR5 (NT).		
Alternate Names:	CC-CKR-5		
Specificity:	Human CCR5		
Host:	Rabbit		
Immunogen:	A peptide corresponding to amino acids 6 to 20 of human CCR5		
Isotype:	IgG		
Formulation:	Liquid in PBS containing 0.02% sodium azide. Precaution: Sodium azide is a poisonous and hazardous substance which should be handled by trained staff only.		
Storage & Stability:	Store at 2-4°C, stable for one year.		
Applications:	Western blot: working dilution of 1:1,000-1:2,000. THP-1 whole cell lysate can be used as a positive control and an approximate 40 kDa band can be detected. Immunohistochemistry: CCR5 antibody can detect CCR5 at 20 µg/ml. The optimal concentration should be determined by the user for each specific application.		
Also available:	Blocking peptide, Catalog No. PX164BP		

Western blot analysis of CCR5 in THP-1 whole cell lysate with the CCR5 antibody at 0.5 µg/ml.



Immunohistochemistry of CCR5 in human lymph node tissue with CCR5 antibody at 20 µg/ml.



NOT FOR HUMAN USE. FOR RESEARCH ONLY. NOT FOR DIAGNOSTIC OR THERAPEUTIC USE.



Cell Sciences®
480 Neponset Street
Bldg 12A
Canton, MA 02021

Toll Free: 888-769-1246
Phone: 781-828-0610
Fax: 781-828-0542

E-mail: info@cellsciences.com
Website: www.cellsciences.com