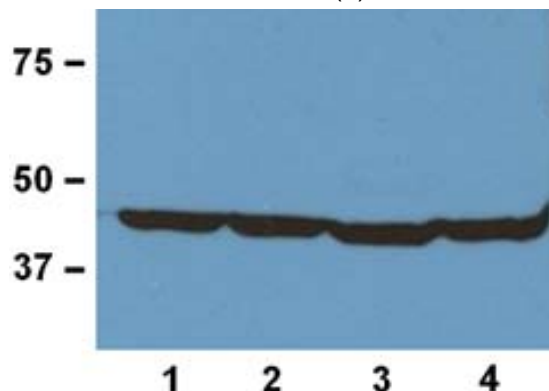


## Mouse Anti-Beta Actin Clone BA3R mAb Loading Control

<b>Catalog No.</b>	CSI20572A CSI20572B	<b>Quantity:</b>	50 µg 100 µg
<b>Description:</b>	Mouse Anti-Beta Actin Clone BA3R mAb Loading Control		
<b>Concentration:</b>	1.0 mg/ml		
<b>Specificity:</b>	Recognizes native and denatured forms of $\beta$ -Actin (~42kDa)		
<b>Host:</b>	Mouse		
<b>Immunogen:</b>	$\beta$ -Actin N-terminal peptide-KLH conjugates		
<b>Isotype:</b>	IgG2b		
<b>Clone:</b>	BA3R		
<b>Formulation:</b>	Liquid in 10 mM PBS, pH 7.2.		
<b>Purification:</b>	Protein A affinity chromatography from mouse ascites fluid		
<b>Applications:</b>	Dot Blot ELISA Immunostaining Western Blot		
<b>Application Notes:</b>	Wesern Blot (with ECL): working dilution of 1:1,000-10,000 (incubate for one hour at room temperature). Immunostaining: working dilution of 1:500-2,000. The optimal concentration should be determined by the user for each specific application.		
<b>Storage &amp; Stability:</b>	Store at 2-4°C (add 0.1% NaN <sub>3</sub> ) for several days to weeks, and at -20°C for longer periods. <b>Avoid repeated freeze-thaw cycles.</b>		



1:1,000 (1 µg/mL) Ab dilution used in WB of 20 µg/lane tissue lysates from human (1), mouse (2), rat (3), and rabbit (4)



NOT FOR HUMAN USE. FOR RESEARCH ONLY. NOT FOR DIAGNOSTIC OR THERAPEUTIC USE.



**Cell Sciences®**  
480 Neponset Street  
Bldg 12A  
Canton, MA 02021

Toll Free: 888-769-1246  
Phone: 781-828-0610  
Fax: 781-828-0542

E-mail: [info@cellsciences.com](mailto:info@cellsciences.com)  
Website: [www.cellsciences.com](http://www.cellsciences.com)