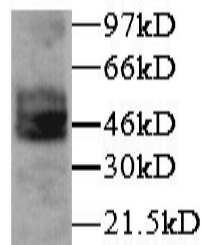


## PAI-1, Rat pAb

<b>Catalog No.</b>	CPP000	<b>Quantity:</b>	200 µg
<b>Name:</b>	Plasminogen Activator Inhibitor-1 (PAI-1)		
<b>Description:</b>	This antibody detects PAI-I, a member of the serpin family of serine protease inhibitors.		
<b>Specificity:</b>	Rat PAI-1		
<b>Host:</b>	Rabbit		
<b>Immunogen:</b>	Recombinant Rat PAI-1		
<b>Isotype:</b>	IgG		
<b>Formulation:</b>	Lyophilized with 0.1% sodium azide. Precaution: Sodium azide is a poisonous and hazardous substance which should be handled by trained staff only.		
<b>Purification:</b>	Protein A purified		
<b>Reconstitution:</b>	<b>Centrifuge vial prior to opening.</b> Reconstitute to 1 mg/ml by adding 200 µl sterile water.		
<b>Cross-Reactivity:</b>	Cross-reactivity to PAI-1 of other species has not been determined.		
<b>Storage &amp; Stability:</b>	Store at 2-4°C for short term storage. For long term storage, aliquot and store at -20°C. <b>Avoid repeated freeze-thaw cycles.</b>		
<b>Applications:</b>	Western blot: working dilution of 1:1,000. The optimal concentration should be determined by the user for each specific application.		



Rat PAI-1 detected by Western blot on Day 3 in a glomerular nephritis model

**NOT FOR HUMAN USE. FOR RESEARCH ONLY. NOT FOR DIAGNOSTIC OR THERAPEUTIC USE.**



**Cell Sciences®**  
480 Neponset Street  
Bldg 12A  
Canton, MA 02021

Toll Free: 888-769-1246  
Phone: 781-828-0610  
Fax: 781-828-0542

E-mail: [info@cellsciences.com](mailto:info@cellsciences.com)  
Website: [www.cellsciences.com](http://www.cellsciences.com)