



Product Information Sheet

Monoclonal Anti-Vimentin

Catalogue No. MA1102

Lot No. 08A12

Clone: VMT-24

Ig type: mouse IgG1

Size: 100µg/vial

Specificity

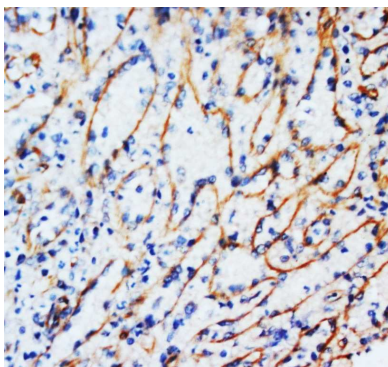
Human, rat.

No cross reactivity with other proteins.

Recommended application

Western blot

Immunohistochemistry(P)



Immunogen

Pig eye lens vimentin.

Purification

Purified by the goat anti-mouse IgG affinity chromatography.

Application

Western blot

At 0.5-1µg/ml with the appropriate system to detect vimentin in cells and tissues.

Immunohistochemistry(P)

At 1.5-2.5µg/ml to detect vimentin in formalin fixed and paraffin embedded tissues.

Other applications have not been tested.

Optimal dilutions should be determined by end user.

Formulation

Lyophilized from 1.2% sodium acetate, with 2mg BSA and 0.01mg NaN₃ as preservative.

Reconstitution

1.2% sodium acetate or neutral PBS. If 1ml of PBS is used, the antibody concentration will be 100µg/ml.

Storage

At -20°C for one year. After reconstitution, at 4°C for one month. It can also be aliquotted and stored frozen at -20°C for longer time.

To reorder contact us at:

Antagene, Inc.

Toll Free: 1(866)964-2589

email: Info@antageneinc.com

FOR RESEARCH USE ONLY. NOT FOR DIAGNOSTIC AND CLINICAL USE.

BACKGROUND

The VIM gene was one of many that Gieser and Swaroop (1992) recovered from a subtracted cDNA library for retinal pigment epithelium. Vimentin gene express in human lymphocytes and in Burkitt's lymphoma cells. Vimentin is secreted by activated macrophages. The gene encoding human vimentin is located on the short arm of chromosome 10.

REFERENCE

1. Lilienbaum, A.; Legagneux, V.; Portier, M.-M.; Dellagi, K.; Paulin, D. : Vimentin gene: expression in human lymphocytes and in Burkitt's lymphoma cells. *EMBO J.* 5: 2809-2814, 1986.
2. Mor-Vaknin, N.; Punturieri, A.; Sitwala, K.; Markovitz, D. M. : Vimentin is secreted by activated macrophages. *Nature Cell Biol.* 5: 59-63, 2003
- 3 Ferrari, S.; Cannizzaro, L. A.; Battini, R.; Huebner, K.; Baserga, R. : The gene encoding human vimentin is located on the short arm of chromosome 10. *Am. J. Hum. Genet.* 41: 616-626, 1987.